

Specification Sheet: Eco Area Light

The Energy Efficient LED Solution

Revolution Lighting's high-performance Eco Area Light can reduce your lighting energy use by as much as 55% compared to conventional lighting and provide a superior quality of light. With its 1-10V dimming function, energy savings will be even higher. The Eco Area Light also features a versatile slide-in mount design for fast, simple installation (sold separately, see Mounting Options).

This product is backed by our industry-leading 70,000-hour life and 7-year warranty.

Contact your Revolution Lighting representative for pricing and more information.

APPLICATIONS

- Parking Areas
- Plazas
- Sporting Arenas
- Roadways
- Walkways

LENS



Type III



Type V

Revolution Lighting Light Distribution



60°

CAN DECREASE ENERGY USAGE BY

55%

vs. Similar Fluorescent Lamps

WARRANTY



Our Industry-Leading 7-Year Limited Warranty Guarantees Unsurpassed Quality



PRODUCT BENEFITS

OPERATIONAL

- 3X greater lamp life than fluorescent
- 70,000-hour lamp life reduces long-term maintenance costs
- Instant on, no warm-up time
- 4-kV surge protector (standard)

SAFETY

- No glass
- Negligible light depreciation over time
- Superior light output
- IP67

SUSTAINABILITY

- Lack of UV or IR minimizes concerns with fading or discoloration
- Mercury-free, allowing for non-hazardous disposal
- 100% recyclable

ORDER LOGIC (Ex. EAL-75-III-SV-D-40 or EAL-75-III-SV-D-40-PC or EAL-75-III-SV-D-40-PC-A)

Product Description	Rated Watts	Lens	Input Voltage (VAC)	Dimming	CCT (K Temp)	Photocell Receptacle	TAA
EAL = Eco Area Light	62 = 62W	III = Type III V = Type V 60D = 60° Flood	SV = 120-277 HV = 347-480*	D = 1-10V	40 = 4000K 50 = 5000K	Blank = No Photocell Receptacle PC = 7-Pin Photocell Receptacle	Blank = Standard (non-TAA) A = TAA (Trade Agreements Act)
	75 = 75W						
	93 = 93W						
	150 = 150W						
	166 = 166W						
	215 = 215W						
220 = 220W							
300 = 300W							

* High voltage models are only available in 150W, 220W, and 300W.

Revolution Lighting Technologies, Inc.
177 Broad Street · 12th Floor · Stamford, CT 06901
Copyright 2018 Revolution Lighting. All rights reserved.

Specifications subject to change without notice.

For more information, visit rulti.com or call 877-578-2536.



Specification Sheet: Eco Area Light

TECHNICAL DATA (Subject to change.)

Catalog No.*	Ordering SKU*	TAA Option**	Rated Watts	Color Temp (K)	Input Voltage (VAC)	Rated Lumens	Rated Efficacy (lm/W)	CRI	Rated Life (Hours)	Operating Temp. (°F)	Lens
62W Eco Area Light, Type III											
EAL-62-III-SV-D-40	11301D-332	Yes	61.1	4000	120-277	8,065	130	>70	70,000	-40 to 113	Type III
EAL-62-III-SV-D-50	11301D-334	Yes	61.1	5000	120-277	8,162	132	>70	70,000	-40 to 113	Type III
62W Eco Area Light, Type III, 7-Pin Photocell Receptacle											
EAL-62-III-SV-D-40-PC	11302D-332	Yes	61.1	4000	120-277	8,065	130	>70	70,000	-40 to 113	Type III
EAL-62-III-SV-D-50-PC	11302D-334	Yes	61.1	5000	120-277	8,162	132	>70	70,000	-40 to 113	Type III
62W Eco Area Light, Type V											
EAL-62-V-SV-D-40	11301D-352	Yes	61.2	4000	120-277	8,611	136	>70	70,000	-40 to 113	Type V
EAL-62-V-SV-D-50	11301D-354	Yes	61.4	5000	120-277	8,702	139	>70	70,000	-40 to 113	Type V
62W Eco Area Light, Type V, 7-Pin Photocell Receptacle											
EAL-62-V-SV-D-40-PC	11302D-352	Yes	61.2	4000	120-277	8,611	136	>70	70,000	-40 to 113	Type V
EAL-62-V-SV-D-50-PC	11302D-354	Yes	61.4	5000	120-277	8,702	139	>70	70,000	-40 to 113	Type V
62W Eco Area Light, 60° Flood											
EAL-62-60D-SV-D-40	11301D-382	Yes	61.3	4000	120-277	8,498	136	>70	70,000	-40 to 113	60°
EAL-62-60D-SV-D-50	11301D-384	Yes	60.1	5000	120-277	8,532	138	>70	70,000	-40 to 113	60°
62W Eco Area Light, 60° Flood, 7-Pin Photocell Receptacle											
EAL-62-60D-SV-D-40-PC	11302D-382	Yes	61.3	4000	120-277	8,498	136	>70	70,000	-40 to 113	60°
EAL-62-60D-SV-D-50-PC	11302D-384	Yes	60.1	5000	120-277	8,532	138	>70	70,000	-40 to 113	60°
75W Eco Area Light, Type III											
EAL-75-III-SV-D-40	113011-332	Yes	74.7	4000	120-277	9,158	122	>70	70,000	-40 to 113	Type III
EAL-75-III-SV-D-50	113011-334	Yes	74.6	5000	120-277	9,333	125	>70	70,000	-40 to 113	Type III
75W Eco Area Light, Type III, 7-Pin Photocell Receptacle											
EAL-75-III-SV-D-40-PC	113021-332	Yes	74.7	4000	120-277	9,158	122	>70	70,000	-40 to 113	Type III
EAL-75-III-SV-D-50-PC	113021-334	Yes	74.6	5000	120-277	9,333	125	>70	70,000	-40 to 113	Type III
75W Eco Area Light, Type V											
EAL-75-V-SV-D-40	113011-352	Yes	74.7	4000	120-277	9,512	127	>70	70,000	-40 to 113	Type V
EAL-75-V-SV-D-50	113011-354	Yes	74.7	5000	120-277	9,769	130	>70	70,000	-40 to 113	Type V
75W Eco Area Light, Type V, 7-Pin Photocell Receptacle											
EAL-75-V-SV-D-40-PC	113021-352	Yes	74.7	4000	120-277	9,512	127	>70	70,000	-40 to 113	Type V
EAL-75-V-SV-D-50-PC	113021-354	Yes	74.7	5000	120-277	9,769	130	>70	70,000	-40 to 113	Type V
75W Eco Area Light, 60° Flood											
EAL-75-60D-SV-D-40	113011-382	Yes	74.7	4000	120-277	9,512	127	>70	70,000	-40 to 113	60°
EAL-75-60D-SV-D-50	113011-384	Yes	74.7	5000	120-277	9,769	130	>70	70,000	-40 to 113	60°
75W Eco Area Light, 60° Flood, 7-Pin Photocell Receptacle											
EAL-75-60D-SV-D-40-PC	113021-382	Yes	74.7	4000	120-277	9,512	127	>70	70,000	-40 to 113	60°
EAL-75-60D-SV-D-50-PC	113021-384	Yes	74.7	5000	120-277	9,769	130	>70	70,000	-40 to 113	60°
93W Eco Area Light, Type III											
EAL-93-III-SV-D-40	11301E-332	Yes	91.6	4000	120-277	12,302	133	>70	70,000	-40 to 113	Type III
EAL-93-III-SV-D-50	11301E-334	Yes	92.4	5000	120-277	12,615	135	>70	70,000	-40 to 113	Type III
93W Eco Area Light, Type III, 7-Pin Photocell Receptacle											
EAL-93-III-SV-D-40-PC	11302E-332	Yes	91.6	4000	120-277	12,302	133	>70	70,000	-40 to 113	Type III
EAL-93-III-SV-D-50-PC	11302E-334	Yes	92.4	5000	120-277	12,615	135	>70	70,000	-40 to 113	Type III
93W Eco Area Light, Type V											
EAL-93-V-SV-D-40	11301E-352	Yes	91.7	4000	120-277	12,919	139	>70	70,000	-40 to 113	Type V
EAL-93-V-SV-D-50	11301E-354	Yes	91.4	5000	120-277	13,265	143	>70	70,000	-40 to 113	Type V
93W Eco Area Light, Type V, 7-Pin Photocell Receptacle											
EAL-93-V-SV-D-40-PC	11302E-352	Yes	91.7	4000	120-277	12,919	139	>70	70,000	-40 to 113	Type V
EAL-93-V-SV-D-50-PC	11302E-354	Yes	91.4	5000	120-277	13,265	143	>70	70,000	-40 to 113	Type V
93W Eco Area Light, 60° Flood											
EAL-93-60D-SV-D-40	11301E-382	Yes	91.8	4000	120-277	12,701	137	>70	70,000	-40 to 113	60°
EAL-93-60D-SV-D-50	11301E-384	Yes	91.5	5000	120-277	12,861	139	>70	70,000	-40 to 113	60°

Product is DLC-Premium

* Mounting hardware must be ordered separately. When ordering, please choose and specify the following SKU values for the desired mounting hardware:
SKU 113000-M01 = Slipfitter; SKU 113000-M02 = Arm - Round Pole; SKU 113000-M03 = Arm - Square Pole; and SKU 113000-M04 = Trunnion

** Note: When ordering TAA-compliant products, include the extension "-A" after the SKU No., as shown in the Order Logic table.

Specification Sheet: Eco Area Light

TECHNICAL DATA (Subject to change.)

Catalog No.*	Ordering SKU*	TAA Option**	Rated Watts	Color Temp (K)	Input Voltage (VAC)	Rated Lumens	Rated Efficacy (lm/W)	CRI	Rated Life (Hours)	Operating Temp. (°F)	Lens
93W Eco Area Light, 60" Flood, 7-Pin Photocell Receptacle											
EAL-93-60D-SV-D-40-PC	11302E-382	Yes	91.8	4000	120-277	12,701	137	>70	70,000	-40 to 113	60"
EAL-93-60D-SV-D-50-PC	11302E-384	Yes	91.5	5000	120-277	12,861	139	>70	70,000	-40 to 113	60"
150W Eco Area Light, Type III											
EAL-150-III-SV-D-40	113013-332	Yes	148.9	4000	120-277	18,130	121	>70	70,000	-40 to 113	Type III
EAL-150-III-SV-D-50	113013-334	Yes	148.9	5000	120-277	18,265	123	>70	70,000	-40 to 113	Type III
150W Eco Area Light, Type III, 7-Pin Photocell Receptacle											
EAL-150-III-SV-D-40-PC	113023-332	Yes	148.9	4000	120-277	18,130	121	>70	70,000	-40 to 113	Type III
EAL-150-III-SV-D-50-PC	113023-334	Yes	148.4	5000	120-277	18,265	123	>70	70,000	-40 to 113	Type III
150W Eco Area Light, Type III, High-Voltage											
EAL-150-III-HV-D-40	113018-332	Yes	151.6	4000	347-480	18,468	121	>70	70,000	-40 to 113	Type III
EAL-150-III-HV-D-50	113018-334	Yes	152.3	5000	347-480	18,823	123	>70	70,000	-40 to 113	Type III
150W Eco Area Light, Type III, High-Voltage, 7-Pin Photocell Receptacle											
EAL-150-III-HV-D-40-PC	113028-332	Yes	151.6	4000	347-480	18,468	121	>70	70,000	-40 to 113	Type III
EAL-150-III-HV-D-50-PC	113028-334	Yes	152.3	5000	347-480	18,823	123	>70	70,000	-40 to 113	Type III
150W Eco Area Light, Type V											
EAL-150-V-SV-D-40	113013-352	Yes	155	4000	120-277	18,325	118	>70	70,000	-40 to 113	Type V
EAL-150-V-SV-D-50	113013-354	Yes	153.7	5000	120-277	18,444	120	>70	70,000	-40 to 113	Type V
150W Eco Area Light, Type V, 7-Pin Photocell Receptacle											
EAL-150-V-SV-D-40-PC	113023-352	Yes	155	4000	120-277	18,325	118	>70	70,000	-40 to 113	Type V
EAL-150-V-SV-D-50-PC	113023-354	Yes	153.7	5000	120-277	18,444	120	>70	70,000	-40 to 113	Type V
150W Eco Area Light, Type V, High-Voltage											
EAL-150-V-SV-D-40-PC	113018-352	Yes	155.3	4000	347-480	18,725	120	>70	70,000	-40 to 113	Type V
EAL-150-V-SV-D-50-PC	113018-354	Yes	157.8	5000	347-480	19,388	122	>70	70,000	-40 to 113	Type V
150W Eco Area Light, Type V, High-Voltage, 7-Pin Photocell Receptacle											
EAL-150-V-HV-D-40-PC	113028-352	Yes	155.3	4000	347-480	18,725	120	>70	70,000	-40 to 113	Type V
EAL-150-V-HV-D-50-PC	113028-354	Yes	157.8	5000	347-480	19,388	122	>70	70,000	-40 to 113	Type V
150W Eco Area Light, 60" Flood											
EAL-150-60D-SV-D-40	113013-382	Yes	155	4000	120-277	18,325	118	>70	70,000	-40 to 113	60"
EAL-150-60D-SV-D-50	113013-384	Yes	153.7	5000	120-277	18,444	120	>70	70,000	-40 to 113	60"
150W Eco Area Light, 60" Flood, 7-Pin Photocell Receptacle											
EAL-150-60D-SV-D-40-PC	113023-382	Yes	155	4000	120-277	18,325	118	>70	70,000	-40 to 113	60"
EAL-150-60D-SV-D-50-PC	113023-384	Yes	153.7	5000	120-277	18,444	120	>70	70,000	-40 to 113	60"
150W Eco Area Light, Type 60", High-Voltage											
EAL-150-60D-SV-D-40-PC	113018-382	Yes	155.3	4000	347-480	18,725	120	>70	70,000	-40 to 113	60"
EAL-150-60D-SV-D-50-PC	113018-384	Yes	157.8	5000	347-480	19,388	122	>70	70,000	-40 to 113	60"
150W Eco Area Light, Type 60", High-Voltage, 7-Pin Photocell Receptacle											
EAL-150-60D-HV-D-40-PC	113028-382	Yes	155.3	4000	347-480	18,725	120	>70	70,000	-40 to 113	60"
EAL-150-60D-HV-D-50-PC	113028-384	Yes	157.8	5000	347-480	19,388	122	>70	70,000	-40 to 113	60"
166W Eco Area Light, Type III											
EAL-166-III-SV-D-40	11301F-332	Yes	166	4000	120-277	20,750	125	>70	70,000	-40 to 113	Type III
EAL-166-III-SV-D-50	11301F-334	Yes	166	5000	120-277	20,750	125	>70	70,000	-40 to 113	Type III
166W Eco Area Light, Type III, 7-Pin Photocell Receptacle											
EAL-166-III-SV-D-40-PC	11302F-332	Yes	166	4000	120-277	20,750	125	>70	70,000	-40 to 113	Type III
EAL-166-III-SV-D-50-PC	11302F-334	Yes	166	5000	120-277	20,750	125	>70	70,000	-40 to 113	Type III
166W Eco Area Light, Type V											
EAL-166-V-SV-D-40	11301F-352	Yes	166	4000	120-277	20,750	125	>70	70,000	-40 to 113	Type V
EAL-166-V-SV-D-50	11301F-354	Yes	166	5000	120-277	20,750	125	>70	70,000	-40 to 113	Type V
166W Eco Area Light, Type V, 7-Pin Photocell Receptacle											
EAL-166-V-SV-D-40-PC	11302F-352	Yes	166	4000	120-277	20,750	125	>70	70,000	-40 to 113	Type V
EAL-166-V-SV-D-50-PC	11302F-354	Yes	166	5000	120-277	20,750	125	>70	70,000	-40 to 113	Type V

Product is DLC-Premium

* Mounting hardware must be ordered separately. When ordering, please choose and specify the following SKU values for the desired mounting hardware:
SKU 113000-M01 = Slipfitter; SKU 113000-M02 = Arm - Round Pole; SKU 113000-M03 = Arm - Square Pole; and SKU 113000-M04 = Trunion

** Note: When ordering TAA-compliant products, include the extension "-A" after the SKU No., as shown in the Order Logic table.

Specification Sheet: Eco Area Light

TECHNICAL DATA (Subject to change.)

Catalog No.*	Ordering SKU*	TAA Option**	Rated Watts	Color Temp (K)	Input Voltage (VAC)	Rated Lumens	Rated Efficacy (lm/W)	CRI	Rated Life (Hours)	Operating Temp. (°F)	Lens
166W Eco Area Light, 60" Flood											
EAL-166-60D-SV-D-40	11301F-382	Yes	161.5	4000	120-277	22,556	138	>70	70,000	-40 to 113	60"
EAL-166-60D-SV-D-50	11301F-384	Yes	162.5	5000	120-277	23,001	141	>70	70,000	-40 to 113	60"
166W Eco Area Light, 60" Flood, 7-Pin Photocell Receptacle											
EAL-166-60D-SV-D-40-PC	11302F-382	Yes	161.5	4000	120-277	22,556	138	>70	70,000	-40 to 113	60"
EAL-166-60D-SV-D-50-PC	11302F-384	Yes	162.5	5000	120-277	23,001	141	>70	70,000	-40 to 113	60"
215W Eco Area Light, Type III											
EAL-215-III-SV-D-40	11301G-332	Yes	215	4000	120-277	26,875	125	>70	70,000	-40 to 113	Type III
EAL-215-III-SV-D-50	11301G-334	Yes	215	5000	120-277	26,875	125	>70	70,000	-40 to 113	Type III
215W Eco Area Light, Type III, 7-Pin Photocell Receptacle											
EAL-215-III-SV-D-40-PC	11302G-332	Yes	215	4000	120-277	26,875	125	>70	70,000	-40 to 113	Type III
EAL-215-III-SV-D-50-PC	11302G-334	Yes	215	5000	120-277	26,875	125	>70	70,000	-40 to 113	Type III
215W Eco Area Light, Type V											
EAL-215-V-SV-D-40	11301G-352	Yes	215	4000	120-277	26,875	125	>70	70,000	-40 to 113	Type V
EAL-215-V-SV-D-50	11301G-354	Yes	215	5000	120-277	26,875	125	>70	70,000	-40 to 113	Type V
215W Eco Area Light, Type V, 7-Pin Photocell Receptacle											
EAL-215-V-SV-D-40-PC	11302G-352	Yes	215	4000	120-277	26,875	125	>70	70,000	-40 to 113	Type V
EAL-215-V-SV-D-50-PC	11302G-354	Yes	215	5000	120-277	26,875	125	>70	70,000	-40 to 113	Type V
215W Eco Area Light, 60" Flood											
EAL-215-60D-SV-D-40	11301G-382	Yes	213.9	4000	120-277	28,548	133	>70	70,000	-40 to 113	60"
EAL-215-60D-SV-D-50	11301G-384	Yes	213.1	5000	120-277	28,866	135	>70	70,000	-40 to 113	60"
215W Eco Area Light, 60" Flood, 7-Pin Photocell Receptacle											
EAL-215-60D-SV-D-40-PC	11302G-382	Yes	213.9	4000	120-277	28,548	133	>70	70,000	-40 to 113	60"
EAL-215-60D-SV-D-50-PC	11302G-384	Yes	213.1	5000	120-277	28,866	135	>70	70,000	-40 to 113	60"
220W Eco Area Light, Type III											
EAL-220-III-SV-D-40	113014-332	Yes	220	4000	120-277	26,750	121	>70	70,000	-40 to 113	Type III
EAL-220-III-SV-D-50	113014-334	Yes	218.7	5000	120-277	27,169	124	>70	70,000	-40 to 113	Type III
220W Eco Area Light, Type III, 7-Pin Photocell Receptacle											
EAL-220-III-SV-D-40-PC	113024-332	Yes	220	4000	120-277	26,750	121	>70	70,000	-40 to 113	Type III
EAL-220-III-SV-D-50-PC	113024-334	Yes	218.7	5000	120-277	27,169	124	>70	70,000	-40 to 113	Type III
220W Eco Area Light, Type III, High-Voltage											
EAL-220-III-HV-D-40	113019-332	Yes	204.1	4000	347-480	27,889	136	>70	70,000	-40 to 113	Type III
EAL-220-III-HV-D-50	113019-334	Yes	206	5000	347-480	28,123	136	>70	70,000	-40 to 113	Type III
220W Eco Area Light, Type III, High-Voltage, 7-Pin Photocell Receptacle											
EAL-220-III-HV-D-40-PC	113029-332	Yes	204.1	4000	347-480	27,889	136	>70	70,000	-40 to 113	Type III
EAL-220-III-HV-D-50-PC	113029-334	Yes	206	5000	347-480	28,123	136	>70	70,000	-40 to 113	Type III
220W Eco Area Light, Type V											
EAL-220-V-SV-D-40	113014-352	Yes	220	4000	120-277	27,312	124	>70	70,000	-40 to 113	Type V
EAL-220-V-SV-D-50	113014-354	Yes	218.7	5000	120-277	27,721	126	>70	70,000	-40 to 113	Type V
220W Eco Area Light, Type V, 7-Pin Photocell Receptacle											
EAL-220-V-SV-D-40-PC	113024-352	Yes	220	4000	120-277	27,312	124	>70	70,000	-40 to 113	Type V
EAL-220-V-SV-D-50-PC	113024-354	Yes	218.7	5000	120-277	27,721	126	>70	70,000	-40 to 113	Type V
220W Eco Area Light, Type V, High-Voltage											
EAL-220-V-HV-D-40	113019-352	Yes	204.1	4000	347-480	27,421	134	>70	70,000	-40 to 113	Type V
EAL-220-V-HV-D-50	113019-354	Yes	206	5000	347-480	26,769	129	>70	70,000	-40 to 113	Type V
220W Eco Area Light, Type V, High-Voltage, 7-Pin Photocell Receptacle											
EAL-220-V-HV-D-40-PC	113029-352	Yes	204.1	4000	347-480	27,421	134	>70	70,000	-40 to 113	Type V
EAL-220-V-HV-D-50-PC	113029-354	Yes	206	5000	347-480	26,769	129	>70	70,000	-40 to 113	Type V
220W Eco Area Light, 60" Flood											
EAL-220-60D-SV-D-40	113014-382	Yes	220	4000	120-277	27,312	124	>70	70,000	-40 to 113	60"
EAL-220-60D-SV-D-50	113014-384	Yes	218.7	5000	120-277	27,721	126	>70	70,000	-40 to 113	60"

Product is DLC-Premium

* Mounting hardware must be ordered separately. When ordering, please choose and specify the following SKU values for the desired mounting hardware:
SKU 113000-M01 = Slipfitter; SKU 113000-M02 = Arm - Round Pole; SKU 113000-M03 = Arm - Square Pole; and SKU 113000-M04 = Trunnion

** Note: When ordering TAA-compliant products, include the extension "-A" after the SKU No., as shown in the Order Logic table.

Specification Sheet: Eco Area Light

TECHNICAL DATA (Subject to change.)

Catalog No.*	Ordering SKU*	TAA Option**	Rated Watts	Color Temp (K)	Input Voltage (VAC)	Rated Lumens	Rated Efficacy (lm/W)	CRI	Rated Life (Hours)	Operating Temp. (°F)	Lens
220W Eco Area Light, 60" Flood, 7-Pin Photocell Receptacle											
EAL-220-60D-SV-D-40-PC	113024-382	Yes	220	4000	120-277	27,312	124	>70	70,000	-40 to 113	60°
EAL-220-60D-SV-D-50-PC	113024-384	Yes	218.7	5000	120-277	27,721	126	>70	70,000	-40 to 113	60°
220W Eco Area Light, 60" Flood, High-Voltage											
EAL-220-60D-HV-D-40	113019-382	Yes	204.1	4000	347-480	27,421	134	>70	70,000	-40 to 113	60°
EAL-220-60D-HV-D-50	113019-384	Yes	206	5000	347-480	26,769	129	>70	70,000	-40 to 113	60°
220W Eco Area Light, 60" Flood, High-Voltage, 7-Pin Photocell Receptacle											
EAL-220-60D-HV-D-40-PC	113029-382	Yes	204.1	4000	347-480	27,421	134	>70	70,000	-40 to 113	60°
EAL-220-60D-HV-D-50-PC	113029-384	Yes	206	5000	347-480	26,769	129	>70	70,000	-40 to 113	60°
300W Eco Area Light, Type III											
EAL-300-III-SV-D-40	113015-332	Yes	298.6	4000	120-277	36,566	122	>70	70,000	-40 to 113	Type III
EAL-300-III-SV-D-50	113015-334	Yes	299.1	5000	120-277	37,382	124	>70	70,000	-40 to 113	Type III
300W Eco Area Light, Type III, 7-Pin Photocell Receptacle											
EAL-300-III-SV-D-40-SF-PC	113025-332	Yes	298.6	4000	120-277	36,566	122	>70	70,000	-40 to 113	Type III
EAL-300-III-SV-D-50-SF-PC	113025-334	Yes	299.1	5000	120-277	37,382	124	>70	70,000	-40 to 113	Type III
300W Eco Area Light, Type III, High-Voltage											
EAL-300-III-HV-D-40	11301A-332	Yes	325.5	4000	347-480	39,434	121	>70	70,000	-40 to 113	Type III
EAL-300-III-HV-D-50	11301A-334	Yes	323.8	5000	347-480	39,818	122	>70	70,000	-40 to 113	Type III
300W Eco Area Light, Type III, High-Voltage, 7-Pin Photocell Receptacle											
EAL-300-III-HV-D-40-PC	11302A-332	Yes	325.5	4000	347-480	39,434	121	>70	70,000	-40 to 113	Type III
EAL-300-III-HV-D-50-PC	11302A-334	Yes	323.8	5000	347-480	39,818	122	>70	70,000	-40 to 113	Type III
300W Eco Area Light, Type V											
EAL-300-V-SV-D-40	113015-352	Yes	298.6	4000	120-277	37,334	125	>70	70,000	-40 to 113	Type V
EAL-300-V-SV-D-50	113015-354	Yes	299.1	5000	120-277	37,707	126	>70	70,000	-40 to 113	Type V
300W Eco Area Light, Type V, 7-Pin Photocell Receptacle											
EAL-300-V-SV-D-40-PC	113025-352	Yes	298.6	4000	120-277	37,334	125	>70	70,000	-40 to 113	Type V
EAL-300-V-SV-D-50-PC	113025-354	Yes	299.1	5000	120-277	37,707	126	>70	70,000	-40 to 113	Type V
300W Eco Area Light, Type V, High-Voltage											
EAL-300-V-HV-D-40	11301A-352	Yes	325.5	4000	347-480	40,262	123	>70	70,000	-40 to 113	Type V
EAL-300-V-HV-D-50	11301A-354	Yes	323.8	5000	347-480	40,665	125	>70	70,000	-40 to 113	Type V
300W Eco Area Light, Type V, High-Voltage, 7-Pin Photocell Receptacle											
EAL-300-V-HV-D-40-PC	11302A-352	Yes	325.5	4000	347-480	40,262	123	>70	70,000	-40 to 113	Type V
EAL-300-V-HV-D-50-PC	11302A-354	Yes	323.8	5000	347-480	40,665	125	>70	70,000	-40 to 113	Type V
300W Eco Area Light, 60" Flood											
EAL-300-60D-SV-D-40	113015-382	Yes	298.6	4000	120-277	37,334	125	>70	70,000	-40 to 113	60°
EAL-300-60D-SV-D-50	113015-384	Yes	299.1	5000	120-277	37,707	126	>70	70,000	-40 to 113	60°
300W Eco Area Light, 60" Flood, 7-Pin Photocell Receptacle											
EAL-300-60D-SV-D-40-PC	113025-382	Yes	298.6	4000	120-277	37,334	125	>70	70,000	-40 to 113	60°
EAL-300-60D-SV-D-50-PC	113025-384	Yes	299.1	5000	120-277	37,707	126	>70	70,000	-40 to 113	60°
300W Eco Area Light, 60" Flood, High-Voltage											
EAL-300-60D-HV-D-40	11301A-382	Yes	325.5	4000	347-480	40,262	123	>70	70,000	-40 to 113	60°
EAL-300-60D-HV-D-50	11301A-384	Yes	323.8	5000	347-480	40,665	125	>70	70,000	-40 to 113	60°
300W Eco Area Light, 60" Flood, High-Voltage, 7-Pin Photocell Receptacle											
EAL-300-60D-HV-D-40-PC	11302A-382	Yes	325.5	4000	347-480	40,262	123	>70	70,000	-40 to 113	60°
EAL-300-60D-HV-D-50-PC	11302A-384	Yes	323.8	5000	347-480	40,665	125	>70	70,000	-40 to 113	60°

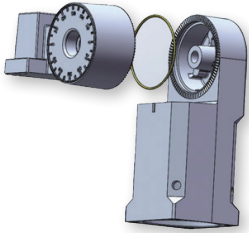
Product is DLC-Premium

* Mounting hardware must be ordered separately. When ordering, please choose and specify the following SKU values for the desired mounting hardware: SKU 113000-M01 = Slipfitter; SKU 113000-M02 = Arm - Round Pole; SKU 113000-M03 = Arm - Square Pole; and SKU 113000-M04 = Trunnion

** Note: When ordering TAA-compliant products, include the extension "-A" after the SKU No., as shown in the Order Logic table.

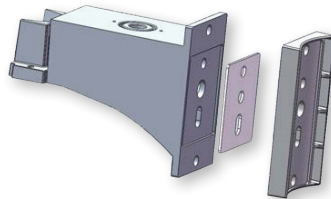
Specification Sheet: Eco Area Light

MOUNTING OPTIONS



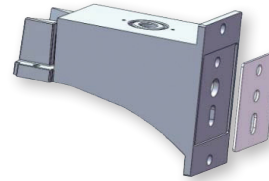
Slipfitter
SKU 113000-M01

- Installation Angle: 0-90°
- Max. Pole/Arm Dia.: 2-3/8 in.
- Detent Rotation: 4° Each Detent



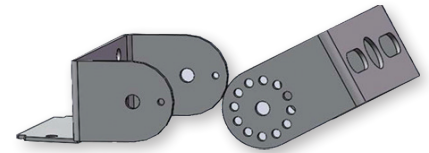
Arm - Round Pole
SKU 113000-M02

- Installation: Wall mount or round pole
- Max. Pole/Arm Dia.: 2-3/8 in.



Arm - Square Pole
SKU 113000-M03

- Installation: Wall mount
- Min. Pole Size: 3 in. x 3 in.



Trunnion
SKU 113000-M04

- Installation Angle: 0-180°
- Max. Pole/Arm Dia.: 2-3/8 in.
- Detent Rotation: 30° Each Detent

PHYSICAL DATA (W/O MOUNT)

Ex. Model No. [†]	Ex. Ordering SKU [†]	Product Dimensions w/o Mount (in.)	Product Weight w/o Mount (lb)
62W Eco Area Light			
EAL-62-III-SV-D-40	11301D-332	12.40W x 10.97L x 2.83H	9.3
62W Eco Area Light, 7-Pin Photocell Receptacle			
EAL-62-III-SV-D-40-PC	11302D-332	12.40W x 10.97L x 2.83H	10.3
75W Eco Area Light			
EAL-75-III-SV-D-40	113011-332	12.40W x 10.97L x 2.83H	9.3
75W Eco Area Light, 7-Pin Photocell Receptacle			
EAL-75-III-SV-D-40-PC	113021-332	12.40W x 10.97L x 2.83H	10.3
93W Eco Area Light			
EAL-93-III-SV-D-40	11301E-332	12.40W x 14.44L x 2.83H	12.4
93W Eco Area Light, 7-Pin Photocell Receptacle			
EAL-93-III-SV-D-40-PC	11302E-332	12.40W x 14.44L x 2.83H	13.4
150W Eco Area Light			
EAL-150-III-SV-D-40	113013-332	12.40W x 14.44L x 2.83H	12.4
150W Eco Area Light, 7-Pin Photocell Receptacle			
EAL-150-III-SV-D-40-PC	113023-332	12.40W x 14.44L x 2.83H	13.4
150W Eco Area Light, High-Voltage			
EAL-150-III-HV-D-40	113018-332	12.40W x 14.44L x 2.83H	12.8
150W Eco Area Light, High-Voltage, 7-Pin Photocell Receptacle			
EAL-150-III-HV-D-40-PC	113028-332	12.40W x 14.44L x 2.83H	13.8
166W Eco Area Light			
EAL-166-III-SV-D-40	11301F-332	12.40W x 17.90L x 2.26H	15.1
166W Eco Area Light, 7-Pin Photocell Receptacle			
EAL-166-III-SV-D-40-PC	11302F-332	12.40W x 17.90L x 2.26H	16.1
215W Eco Area Light			
EAL-215-III-SV-D-40	1301G-332	12.40W x 17.90L x 2.26H	15.1

[†] All models with the same wattage and configurations as the example models listed here will have the same physical specs.

Specification Sheet: Eco Area Light

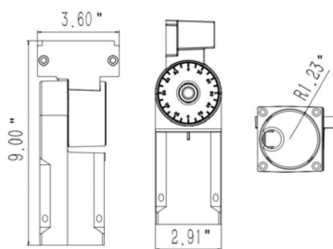
PHYSICAL DATA (W/O MOUNT)

Ex. Model No.†	Ex. Ordering SKU †	Product Dimensions w/o Mount (in.)	Product Weight w/o Mount (lb)
215W Eco Area Light, 7-Pin Photocell Receptacle			
EAL-215-III-SV-D-40-PC	1302G-332	12.40W x 17.90L x 2.26H	16.1
220W Eco Area Light			
EAL-220-III-SV-D-40	113014-332	12.40W x 17.90L x 2.26H	15.1
220W Eco Area Light, 7-Pin Photocell Receptacle			
EAL-220-III-SV-D-40-PC	113024-332	12.40W x 17.90L x 2.83H	16.1
220W Eco Area Light, High-Voltage			
EAL-220-III-HV-D-40	113019-332	12.40W x 17.90L x 2.83H	15.5
220W Eco Area Light, High-Voltage, 7-Pin Photocell Receptacle			
EAL-220-III-HV-D-40-PC	113029-332	12.40W x 17.90L x 2.83H	16.5
300W Eco Area Light			
EAL-300-III-SV-D-40	113015-332	12.40W x 22.75L x 2.83H	19.3
300W Eco Area Light, 7-Pin Photocell Receptacle			
EAL-300-III-SV-D-40-PC	113025-332	12.40W x 22.75L x 2.83H	20.3
300W Eco Area Light, High-Voltage			
EAL-300-III-HV-D-40	11301A-332	12.40W x 22.75L x 2.83H	19.7
300W Eco Area Light, High-Voltage, 7-Pin Photocell Receptacle			
EAL-300-III-HV-D-40-PC	11302A-332	12.40W x 22.75L x 2.83H	20.7

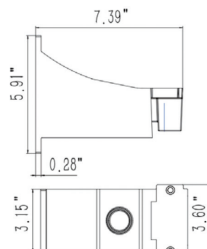
† All models with the same wattage and configurations as the example models listed here will have the same physical specs.

MOUNTING ARMS

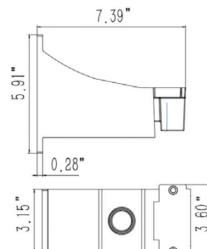
Mount	Ordering SKU	Pole Size	Max Load (lb)	Product Dimensions (in.)	Product Weight (lb)
Slipfitter	113000-M01	2 3/8" Dia. Max.	110	9.00"L x 3.60"W x 2.91"H	3.0
Arm - Round Pole	113000-M02	4", 5" & 6" Dia.	110	7.39"L x 3.15"W x 5.91"H	3.0
Arm - Square Pole	113000-M03	3" x 3" Min.	110	7.39"L x 3.15"W x 5.91"H	2.4
Trunnion	113000-M04	2 3/8" Dia. Max.	110	5.41"L x 5.08"W x 1.97"H	2.0



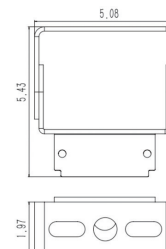
Not to Scale
Slipfitter
SKU 113000-M01



Not to Scale
Arm - Round Pole
SKU 113000-M02



Not to Scale
Arm - Square Pole
SKU 113000-M03



Not to Scale
Trunnion
SKU 113000-M04