

Specification Sheet: Eco Linear High Bays

Increase Visibility with Brighter, More Efficient Lighting

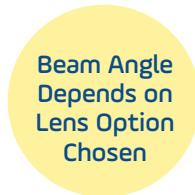
Better lighting can reduce eye-fatigue, improve visibility, and transform the appeal of a space, from warehouses to big-box stores. Our new Eco Linear High Bay fixtures provide bright, tailored illumination featuring three lens options for your specific needs: DLA, for lighting along narrow warehouse aisles; DLM, for wider aisle-illumination needs; and GPL, for broad, symmetrical illumination and low glare. Other options include: 347VAC/480VAC operation, battery backup, occupancy/daylight sensor, protective wire guards, and a surface-mounting junction box.

Designed for easy mounting (V-hook, cable, or surface mount), these strong, lightweight, fully-assembled fixtures replace existing fluorescent or MH high-bays and provide superior uniformity for high visibility. The efficiency of Eco Linear High Bays reduces energy consumption by 50% over existing fluorescent fixtures, increasing the return on your lighting investment. Moreover, these LED high bays are DLC-Premium listed, qualifying them for premium rebates. And with 0-10V dimming, our Linear High Bays can reduce energy costs even further. With a 50,000-hour rated life and 7-year warranty, our Eco Linear High Bays significantly reduce your long-term operational and maintenance costs.

APPLICATIONS

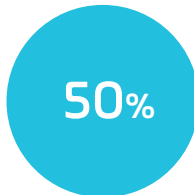
- Warehouses
- Recreation Centers
- Gymnasiums
- Big-Box Stores
- Indoor Stadiums

BEAM ANGLE



Revolution Lighting Light Distribution

CAN DECREASE ENERGY USAGE BY



vs. Similar Fluorescent Lamps

WARRANTY



Our Industry-Leading 7-Year Limited Warranty Guarantees Unsurpassed Quality



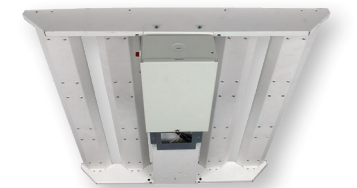
64W Eco Linear High Bay



128W Eco Linear High Bay



258W Eco Linear High Bay



100W with Battery Backup

PRODUCT BENEFITS

OPERATIONAL

- 3X greater lamp life than fluorescent
- 50,000-hour lamp life reduces long-term maintenance costs
- Instant on, no warm-up time
- 0-10V dimming
- Available with three lens options, battery backup and high-voltage models

SAFETY

- No glass
- Negligible light depreciation over time
- Superior light output
- Carries a UL rating of Suitable for Damp Locations

SUSTAINABILITY

- Lack of UV or IR minimizes concerns with fading or discoloration
- Mercury-free, allowing for non-hazardous disposal
- 100% recyclable

ORDER LOGIC (Ex. ELHB-64-12-D-DLA-SV-40 or ELHB-64-12-D-DLA-SV-40-BB)

Product Description	Power	Dimensions	Controls	Optics	Input Voltages (VAC)	CCT (K Temp)	Battery Backup Option
ELHB = Eco Linear High Bay	64 = 64W 83 = 83W	12 = 1' x 2'	D = 0-10V Dimming	DLA = Discrete Lens Aisle	SV = 120-277	40 = 4000K 50 = 5000K	Blank = Standard BB = Battery Backup
	100 = 100W 128 = 128W 167 = 167W	22 = 2' x 2'		DLM = Discrete Lens Medium			
	160 = 160W 258 = 258W	24 = 2' x 4'		PL = Prismatic Lens			
	70 = 70W 91 = 91W	12 = 1' x 2'		DLA = Discrete Lens Aisle			
	140 = 140W 182 = 182W	22 = 2' x 2'		DLM = Discrete Lens Medium			
	282 = 282W 365 = 365W	24 = 2' x 4'		PL = Prismatic Lens			



Specification Sheet: Eco Linear High Bays

TECHNICAL DATA[†] (Subject to change. See footnotes and chart below for product configuration information.)

Catalog No.*	Product SKU No.*	Rated Watts	Mounting	Battery Backup Option	Input Voltage (VAC)	Color Temp (K)	Rated Lumens	Rated Efficacy (lm/W)	CRI	Beam Angles*	Rated Life (Hours)	Operating Temp. (°F)
Standard-Voltage Eco Linear High Bays (120-277VAC)												
64W 1' x 2' Eco Linear High Bay												
ELHB-64-12-D-XXX-SV-40	128010-1X3	65.1	V-Hook/Chain/Surface	Yes	120-277	4000	9,153	140	83	XX° x XX°	50,000	-4 to 131
ELHB-64-12-D-XXX-SV-50	128010-1X5	64.9	V-Hook/Chain/Surface	Yes	120-277	5000	9,394	144	85	XX° x XX°	50,000	-4 to 131
83W 1' x 2' Eco Linear High Bay												
ELHB-83-12-D-XXX-SV-40	128011-1X3	83.2	V-Hook/Chain/Surface	Yes	120-277	4000	11,519	138	83	XX° x XX°	50,000	-4 to 131
ELHB-83-12-D-XXX-SV-50	128011-1X5	84.1	V-Hook/Chain/Surface	Yes	120-277	5000	11,966	142	85	XX° x XX°	50,000	-4 to 131
100W 2' x 2' Eco Linear High Bay												
ELHB-100-22-D-XXX-SV-40	128016-1X3	98.8	V-Hook/Chain/Surface	Yes	120-277	4000	14,363	145	85	XX° x XX°	50,000	-4 to 131
ELHB-100-22-D-XXX-SV-50	128016-1X5	99.9	V-Hook/Chain/Surface	Yes	120-277	5000	15,011	150	85	XX° x XX°	50,000	-4 to 131
128W 2' x 2' Eco Linear High Bay												
ELHB-128-22-D-XXX-SV-40	128012-1X3	130.2	V-Hook/Chain/Surface	Yes	120-277	4000	18,278	140	83	XX° x XX°	50,000	-4 to 131
ELHB-128-22-D-XXX-SV-50	128012-1X5	128.9	V-Hook/Chain/Surface	Yes	120-277	5000	18,733	145	85	XX° x XX°	50,000	-4 to 131
167W 2' x 2' Eco Linear High Bay												
ELHB-167-22-D-XXX-SV-40	128013-1X3	165.1	V-Hook/Chain/Surface	Yes	120-277	4000	23,253	140	83	XX° x XX°	50,000	-4 to 131
ELHB-167-22-D-XXX-SV-50	128013-1X5	167.9	V-Hook/Chain/Surface	Yes	120-277	5000	24,218	144	85	XX° x XX°	50,000	-4 to 131
160W 2' x 4' Eco Linear High Bay												
ELHB-160-24-D-XXX-SV-40	128017-1X3	156.8	V-Hook/Chain/Surface	Yes	120-277	4000	23,312	148	84	XX° x XX°	50,000	-4 to 131
ELHB-160-24-D-XXX-SV-50	128017-1X5	158.1	V-Hook/Chain/Surface	Yes	120-277	5000	24,502	154	85	XX° x XX°	50,000	-4 to 131
258W 2' x 4' Eco Linear High Bay												
ELHB-258-24-D-XXX-SV-40	128014-1X3	263.5	V-Hook/Chain/Surface	Yes	120-277	4000	36,214	137	83	XX° x XX°	50,000	-4 to 131
ELHB-258-24-D-XXX-SV-50	128014-1X5	262.1	V-Hook/Chain/Surface	Yes	120-277	5000	37,120	141	85	XX° x XX°	50,000	-4 to 131
High-Voltage Eco Linear High Bays (347VAC/480VAC)												
70W 1' x 2' Eco Linear High Bay												
ELHB-70-12-D-XXX-HV-40	128210-1X3	68.3	V-Hook/Chain/Surface	Yes	347/480	4000	9,089	132	83	XX° x XX°	50,000	-4 to 131
ELHB-70-12-D-XXX-HV-50	128210-1X5	69.4	V-Hook/Chain/Surface	Yes	347/480	5000	9,372	135	85	XX° x XX°	50,000	-4 to 131
91W 1' x 2' Eco Linear High Bay												
ELHB-91-12-D-XXX-HV-40	128211-1X3	87	V-Hook/Chain/Surface	Yes	347/480	4000	11,420	131	83	XX° x XX°	50,000	-4 to 131
ELHB-91-12-D-XXX-HV-50	128211-1X5	88.1	V-Hook/Chain/Surface	Yes	347/480	5000	11,880	134	85	XX° x XX°	50,000	-4 to 131
140W 2' x 2' Eco Linear High Bay												
ELHB-140-22-D-XXX-HV-40	128212-1X3	138.1	V-Hook/Chain/Surface	Yes	347/480	4000	18,253	132	83	XX° x XX°	50,000	-4 to 131
ELHB-140-22-D-XXX-HV-50	128212-1X5	138.1	V-Hook/Chain/Surface	Yes	347/480	5000	18,905	136	85	XX° x XX°	50,000	-4 to 131
182W 2' x 2' Eco Linear High Bay												
ELHB-182-22-D-XXX-HV-40	128213-1X3	176.5	V-Hook/Chain/Surface	Yes	347/480	4000	23,184	131	83	XX° x XX°	50,000	-4 to 131
ELHB-182-22-D-XXX-HV-50	128213-1X5	177	V-Hook/Chain/Surface	Yes	347/480	5000	23,928	135	85	XX° x XX°	50,000	-4 to 131
282W 2' x 4' Eco Linear High Bay												
ELHB-282-24-D-XXX-HV-40	128214-1X3	278.1	V-Hook/Chain/Surface	Yes	347/480	4000	36,927	132	84	XX° x XX°	50,000	-4 to 131
ELHB-282-24-D-XXX-HV-50	128214-1X5	278.8	V-Hook/Chain/Surface	Yes	347/480	5000	37,786	135	85	XX° x XX°	50,000	-4 to 131
365W 2' x 4' Eco Linear High Bay												
ELHB-365-24-D-XXX-HV-40	128215-1X3	356.3	V-Hook/Chain/Surface	Yes	347/480	4000	46,895	131	84	XX° x XX°	50,000	-4 to 131
ELHB-365-24-D-XXX-HV-50	128215-1X5	357.3	V-Hook/Chain/Surface	Yes	347/480	5000	48,544	135	85	XX° x XX°	50,000	-4 to 131

Product is DLC-listed, Premium.

[†] All listed specs are for the DLM (Discrete Lens Medium) lens option. Specs will vary slightly, depending on which lens option is ordered. For battery-backup specs (Fulham FireHorse Hotspot FHSBATT8-D4), contact your Revolution Lighting representative.

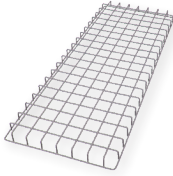
* Note 1: The Catalog No., SKU No., and Beam Angles all depend on which lens option is ordered: Discrete Lens Aisle, General Prismatic Lens, or Discrete Lens Medium. Use the following chart to determine what values to use in the above table when ordering:

Spec	Discrete Lens Aisle	General Prismatic Lens	Discrete Lens Medium
Catalog No.	XXX = DLA	XXX = GPL	XXX = DLM
SKU No.	X = 0	X = 1	X = 2
Beam Angles	XX° x XX° = 90° x 30°	XX° x XX° = 95° x 95°	XX° x XX° = 90° x 85°

* Note 2: When ordering with battery backup, please add '-BB' after the Order No. and the SKU. (See Order Logic examples above.)

Specification Sheet: Eco Linear High Bays

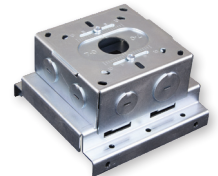
OPTIONAL ACCESSORIES



Wire Guard Kits
(SKUs 128010-W01, 1' x 2'; 128010-W02, 2' x 2'; 128010-W03, 2' x 4')



IP65-Rated Microwave Motion/Daylight Sensor
(SKU 121000-C01)*

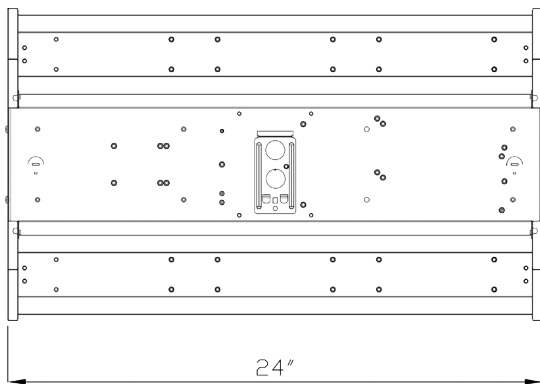


Surface-Mounting Junction Box
(SKU 128010-J00)

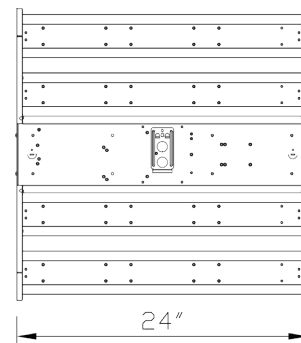
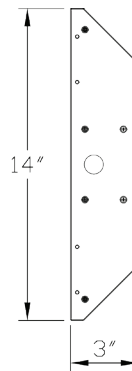
* Caution: Motion/Daylight Sensor operates only with standard 120-277VAC models. Do not use this sensor accessory with high-voltage high bays.

Note: Order these accessories separately with the SKUs provided. Three wire guard kits are available, one for each of the three fixture sizes; the Motion/Daylight Sensor is designed to mount directly to a conduit knockout; and the Surface-Mounting Junction Box permits surface mounting of the fixture.

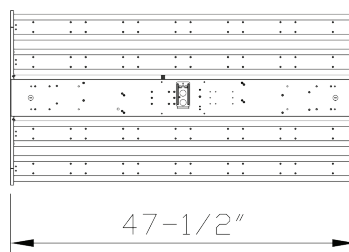
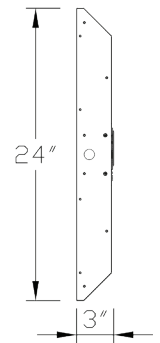
DIAGRAMS



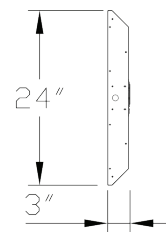
64W Eco Linear High Bay



128W Eco Linear High Bay



258W Eco Linear High Bay



Specification Sheet: Eco Linear High Bays

PHYSICAL DATA

Catalog No.	Product SKU No.	Product Dimensions (in.)	Product Weight (lb)	Product Dimensions with Battery (in.)	Product Weight with Battery (lb)
Standard-Voltage Eco Linear High Bays (120-277VAC)					
64W 1' x 2' Eco Linear High Bay					
ELHB-64-12-D-XXX-SV-40	128010-1X3	24L x 14W x 2.88H	8.8	24L x 14W x 6H	13.3
ELHB-64-12-D-XXX-SV-50	128010-1X5	24L x 14W x 2.88H	8.8	24L x 14W x 6H	13.3
83W 1' x 2' Eco Linear High Bay					
ELHB-83-12-D-XXX-SV-40	128011-1X3	24L x 14W x 2.88H	8.8	24L x 14W x 6H	13.3
ELHB-83-12-D-XXX-SV-50	128011-1X5	24L x 14W x 2.88H	8.8	24L x 14W x 6H	13.3
100W 2' x 2' Eco Linear High Bay					
ELHB-100-22-D-XXX-SV-40	128016-1X3	24L x 24W x 2.88H	14	24L x 24W x 6H	18.5
ELHB-100-22-D-XXX-SV-50	128016-1X5	24L x 24W x 2.88H	14	24L x 24W x 6H	18.5
128W 2' x 2' Eco Linear High Bay					
ELHB-128-22-D-XXX-SV-40	128012-1X3	24L x 24W x 2.88H	14	24L x 24W x 6H	18.5
ELHB-128-22-D-XXX-SV-50	128012-1X5	24L x 24W x 2.88H	14	24L x 24W x 6H	18.5
167W 2' x 2' Eco Linear High Bay					
ELHB-167-22-D-XXX-SV-40	128013-1X3	24L x 24W x 2.88H	14	24L x 24W x 6H	18.5
ELHB-167-22-D-XXX-SV-50	128013-1X5	24L x 24W x 2.88H	14	24L x 24W x 6H	18.5
160W 2' x 4' Eco Linear High Bay					
ELHB-160-24-D-XXX-SV-40	128017-1X3	48L x 24W x 2.88H	24.4	48L x 24W x 6H	28.9
ELHB-160-24-D-XXX-SV-50	128017-1X5	48L x 24W x 2.88H	24.4	48L x 24W x 6H	28.9
258W 2' x 4' Eco Linear High Bay					
ELHB-258-24-D-XXX-SV-40	128014-1X3	48L x 24W x 2.88H	24.4	48L x 24W x 6H	28.9
ELHB-258-24-D-XXX-SV-50	128014-1X5	48L x 24W x 2.88H	24.4	48L x 24W x 6H	28.9
High-Voltage Eco Linear High Bays (347VAC/480VAC)					
70W 1' x 2' Eco Linear High Bay					
ELHB-70-12-D-XXX-HV-40	128210-1X3	24L x 14W x 2.88H	11	24L x 14W x 6H	15.5
ELHB-70-12-D-XXX-HV-50	128210-1X5	24L x 14W x 2.88H	11	24L x 14W x 6H	15.5
91W 1' x 2' Eco Linear High Bay					
ELHB-91-12-D-XXX-HV-40	128211-1X3	24L x 14W x 2.88H	11	24L x 14W x 6H	15.5
ELHB-91-12-D-XXX-HV-50	128211-1X5	24L x 14W x 2.88H	11	24L x 14W x 6H	15.5
140W 2' x 2' Eco Linear High Bay					
ELHB-140-22-D-XXX-HV-40	128212-1X3	24L x 24W x 2.88H	16.5	24L x 24W x 6H	21
ELHB-140-22-D-XXX-HV-50	128212-1X5	24L x 24W x 2.88H	16.5	24L x 24W x 6H	21
182W 2' x 2' Eco Linear High Bay					
ELHB-182-22-D-XXX-HV-40	128213-1X3	24L x 24W x 2.88H	16.5	24L x 24W x 6H	21
ELHB-182-22-D-XXX-HV-50	128213-1X5	24L x 24W x 2.88H	16.5	24L x 24W x 6H	21
282W 2' x 4' Eco Linear High Bay					
ELHB-282-24-D-XXX-HV-40	128214-1X3	48L x 24W x 2.88H	29.7	48L x 24W x 6H	34.2
ELHB-282-24-D-XXX-HV-50	128214-1X5	48L x 24W x 2.88H	29.7	48L x 24W x 6H	34.2
365W 2' x 4' Eco Linear High Bay					
ELHB-365-24-D-XXX-HV-40	128215-1X3	48L x 24W x 2.88H	29.7	48L x 24W x 6H	34.2
ELHB-365-24-D-XXX-HV-50	128215-1X5	48L x 24W x 2.88H	29.7	48L x 24W x 6H	34.2

Note: Physical dimensions and weights will vary, depending on which optional accessories are ordered.