

# Specification Sheet: Eco Low-Profile High Bays

## Increase Productivity with Better Quality and More Efficient Lighting

Better lighting can reduce eye-fatigue, improve working conditions, and transform the appeal of a space, from industrial facilities to warehouses to gymnasiums. Our Eco Low-Profile High Bays bring increased energy efficiency to the workspace, improving the return on your lighting investment.

Specifically designed to provide superior uniformity and low-glare illumination for high visibility, these advanced LED high bays are 50% more efficient than traditional lighting, and with 0-10V dimming they can provide even higher energy savings. The IP65-rated housing also makes them suitable for wet locations. When combined with a 70,000-hour rated life and 7-year warranty, your long-term operational and maintenance costs will be significantly reduced. Optional accessories include motion/daylight sensor, polycarbonate lens, wire guard, and 70° polycarbonate reflector cone.

### APPLICATIONS

- Sporting Arenas
- Warehouses
- Manufacturing Facilities
- Big-Box Retail Stores
- Gymnasiums
- Cold Storage
- Convention Centers

### ILLUMINATION ANGLE



Light Distribution without Cone

### CAN DECREASE ENERGY USAGE BY



vs. Similar Fluorescent Lamps

### WARRANTY



Our Industry-Leading 7-Year Limited Warranty Guarantees Unsurpassed Quality

## PRODUCT BENEFITS

### OPERATIONAL

- 3X greater lamp life than fluorescent
- 70,000-hour lamp life reduces long-term maintenance costs
- Instant on, no warm-up time
- Optional accessories available
- 0-10V dimming
- IP65 ingress protection

### SAFETY

- Tempered glass lens
- Negligible light depreciation over time
- Superior light output

### SUSTAINABILITY

- Lack of UV or IR minimizes concerns with fading or discoloration
- Mercury-free, allowing for non-hazardous disposal
- 100% recyclable



Eco Low-Profile High Bay (Without Reflector Cone)



Eco Low-Profile High Bay (With Optional Reflector Cone)

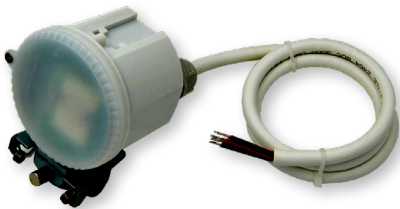
## ORDER LOGIC (Ex. ELPHB-100-50-D)

Product Description	Lamp Wattage	CCT (K Temp)	Controls
ELPHB = Eco Low-Pro High Bays	- 100 = 100W	- 40 = 4000K	- D = 0-10V Dimming
	- 150 = 150W	- 50 = 5000K	
		- 40 = 4000K	



# Specification Sheet: Eco Low-Profile High Bays

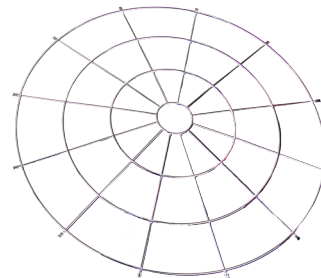
## OPTIONAL ACCESSORIES



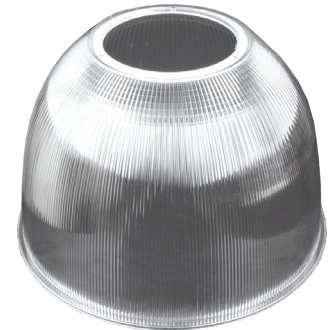
Optional IP65 Microwave Motion/Daylight Sensor  
(SKU# 121000-C00)



Optional Polycarbonate Lens  
(SKU: 12100L-200)



Optional Chromed Metal Wire Guard  
(SKU: 12100E-200)



Optional Polycarbonate Reflector Cone  
(SKU: 12100R-200)

Note: Optional accessories must be ordered separately.

## TECHNICAL DATA (Subject to change.)

Catalog No.	Product SKU No.	Rated Watts	Input Voltage (VAC)	Color Temp (K)	Rated Lumens	Rated Efficacy (lm/W)	CRI	Illumination Angle (No Cone) *	Rated Life (Hours)	Operating Temp. (°F)
<b>Eco Low-Profile High Bays</b>										
ELPHB-100-40-D	121031-231	98.6	120-277	4000	13,428	136	82	120°	70,000	-40 to 122
ELPHB-100-50-D	121031-232	99.8	120-277	5000	13,825	138	84	120°	70,000	-40 to 122
ELPHB-150-40-D	121032-231	147.2	120-277	4000	20,130	136	82	120°	70,000	-40 to 122

\* Note: Additional optional accessories for the Eco Low-Profile High Bay are available to order. Please note that reflector cones, lenses, and wire guards will alter light distribution and appearance. Contact your Revolution Lighting representative for details.

Product is DLC-listed, Premium.

## PHYSICAL DATA

Catalog No.	Product SKU No.	Product Dimensions (in.)*	Product Weight (lb)*
<b>Eco Low-Profile High Bays</b>			
ELPHB-100-40-D	121031-231	19.76H x 16.14 Dia.	10.08
ELPHB-100-50-D	121031-232	19.76H x 16.14 Dia.	10.08
ELPHB-150-40-D	121032-231	19.76H x 16.14 Dia.	10.85
<b>Optional Clip-On Microwave Motion/Daylight Sensor</b>			
N/A	121000-C00	2.38H x 2.75 Dia. (Plus Cable Gland & Clip)	0.46
<b>Optional Polycarbonate Lens</b>			
N/A	12100L-200	1.5H x 16 Dia.	0.8
<b>Optional Wire Guard</b>			
N/A	12100E-200	1.5H x 16 Dia.	0.6
<b>Optional 70° Polycarbonate Reflector Cone</b>			
N/A	12100R-200	10.8H x 16 Dia.	1.1

\* High-bay dimensions and weights include the optional 70° polycarbonate reflector cone.