

## Specification Sheet: Eco SpunBay High Bay

### The Energy Efficient LED Solution

Better lighting can reduce eye-fatigue, improve working conditions, and transform the appeal of a space, from industrial facilities to warehouses to gymnasiums. Our Eco SpunBay high bay fixtures bring increased energy efficiency to the workspace, improving the return on your lighting investment.

Specifically designed to provide superior uniformity and low-glare illumination for high visibility, these advanced LED high bays are 50% more efficient than traditional lighting, and with 0-10V dimming they can provide even higher energy savings. The IP65-rated housing also makes them suitable for wet locations. When combined with a 70,000-hour rated life and 7-year warranty, your long-term operational and maintenance costs will be significantly reduced. The Eco SpunBay can be ordered for standard-voltage applications (120-277VAC) or high-voltage applications (347-480VAC). Optional accessories include polycarbonate lenses, wire guards, and 60°, 70°, or 90° reflector cones.

#### APPLICATIONS

- Sporting Arenas
- Warehouses
- Manufacturing Facilities
- Big-Box Retail Stores
- Gymnasiums
- Cold Storage
- Convention Centers

#### ILLUMINATION ANGLE

**120°**

Revolution Lighting  
 Light Distribution  
 without Cone

#### CAN DECREASE ENERGY USAGE BY

**50%**

vs. Similar  
 Fluorescent Lamps

#### WARRANTY



Our Industry-Leading 7-Year  
 Limited Warranty Guarantees  
 Unsurpassed Quality

### PRODUCT BENEFITS

#### OPERATIONAL

- 3X greater lamp life than fluorescent
- 70,000-hour lamp life reduces long-term maintenance costs
- Instant on, no warm-up time
- Optional clip-on motion/daylight sensor, wire guard and polycarbonate lens
- 0-10V dimming
- IP65 housing

#### SAFETY

- Tempered glass lens
- Negligible light depreciation over time
- Superior light output

#### SUSTAINABILITY

- Lack of UV or IR minimizes concerns with fading or discoloration
- Mercury-free, allowing for non-hazardous disposal
- 100% recyclable



100W Eco SpunBay shown  
 with optional 60° cone



# Specification Sheet: Eco SpunBay High Bay

## TECHNICAL DATA (Subject to change.)

Catalog No.	Product SKU No.	Rated Watts	Input Voltage (VAC)	Color Temp (K)	Rated Lumens	Rated Efficacy (lm/W)	CRI	Illumination Angle (No Cone)*	Rated Life (Hours)	Operating Temp. (°F)
<b>Eco SpunBay High Bay, Standard Voltage</b>										
ESBSV-100-40-D	121051-231	98.6	120-277	4000	13,428	136	82	120°	70,000	-40 to 122
ESBSV-150-40-D	121052-231	147.2	120-277	4000	20,130	136	82	120°	70,000	-40 to 122
ESBSV-150-50-D	121052-232	148.1	120-277	5000	20,521	138	84	120°	70,000	-40 to 122
<b>Eco SpunBay High Bay, High Voltage</b>										
ESBHV-150-50-D	121252-232	146.5	347-480	5000	20,343	138	84	120°	70,000	-40 to 122

\* Note: Additional optional accessories for the Eco SpunBay are available to order. Please note that reflector cones, lenses, and wire guards will alter light distribution and appearance. Contact your Revolution Lighting representative for details.

Product is DLC-listed, Premium.

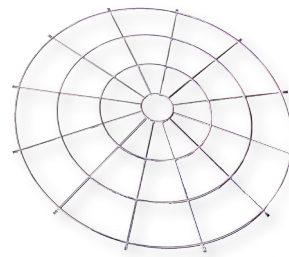
## OPTIONAL ACCESSORIES



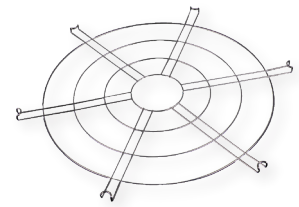
Optional 16" Polycarbonate Lens  
(SKU: 12100L-200)



Optional 14" Polycarbonate Lens  
(SKU: 12100L-201)



Optional 16" Chromed Metal Wire Guard  
(SKU: 12100E-200)



Optional 14" Chromed Metal Wire Guard  
(SKU: 12100E-201)



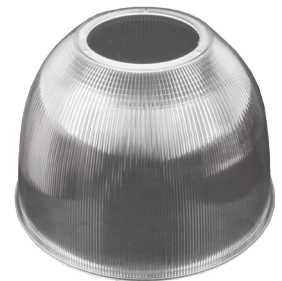
Optional IP65 Microwave Motion/Daylight Sensor  
(SKU: 121000-C00)



Optional 90° Aluminum Cone  
(SKU: 12100R-203)



Optional 60° Aluminum Cone  
(SKU: 12100R-205)



Optional Clear 70° Polycarbonate Cone  
(SKU: 12100R-200)

## Specification Sheet: Eco SpunBay High Bay

### PHYSICAL DATA

Catalog No.	Product SKU No.	Product Dimensions (in.)*	Product Weight (lb)*
<b>Eco SpunBay High Bay, Standard Voltage</b>			
ESBSV-100-40-D	121051-231	15.68H x 14 Dia.	8.4
ESBSV-150-40-D	121052-231	15.68H x 14 Dia.	9.9
ESBSV-150-50-D	121052-232	15.68H x 14 Dia.	9.9
<b>Eco SpunBay High Bay, High Voltage</b>			
ESBHV-150-50-D	121252-232	14.54H x 14 Dia.	8.6
<b>Optional Clip-On Microwave Motion/Daylight Sensor</b>			
N/A	121000-C00	2.38H x 2.75 Dia. (Plus Cable Gland & Clip)	0.46
<b>Optional 16" Polycarbonate Lens</b>			
N/A	12100L-200	1.5H x 16 Dia.	0.8
<b>Optional 16" Wire Guard</b>			
N/A	12100E-200	1.5H x 16 Dia.	0.6
<b>Optional 14" Polycarbonate Lens†</b>			
N/A	12100L-201	0.085H x 14 Dia.	0.5
<b>Optional 14" Wire Guard†</b>			
N/A	12100E-201	0.650H x 14 Dia.	0.25
<b>Optional 70° Polycarbonate Reflector Cone</b>			
N/A	12100R-201	10.8H X 16 Dia.	2.0
<b>Optional 60° Aluminum Reflector Cone</b>			
N/A	12100R-205	5.9H X 14 Dia.	1.0
<b>Optional 90° Aluminum Reflector Cone</b>			
N/A	12100R-203	5.9H X 14 Dia.	1.1

\* Note: High-bay dimensions and weights include a 60° white aluminum reflector cone.

† Note: The optional 14" lens and 14" wire guard cannot be used together. Please order one or the other, but not both.