

Specification Sheet: LED Eco Wall Packs

Put Your Building in the Best Light

Whether you need to light your building exterior in complimentary light to show it at its best, or provide security around it, our wall packs deliver an energy-saving option, combined with a 50,000-hour rated life and 5-year warranty to ensure safety through high quality lighting.

Our state-of-the-art LED lighting solutions are durable, reliable and high-performance. Ideal for either dry or wet locations, our Eco Wall Pack features an IP65-rated and IK08 impact protection aluminum housing, driver-on-board design, and four optional mounting accessories.

APPLICATIONS

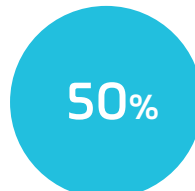
- Factories
- Walkways
- Building Perimeters
- Security Areas
- Parking Structures
- Egress Illumination

ILLUMINATION ANGLE



Revolution Lighting Light Distribution

CAN DECREASE ENERGY USAGE BY



vs. Similar Fixtures

WARRANTY



Our Industry-Leading 5-Year Limited Warranty Guarantees Unsurpassed Quality

PRODUCT BENEFITS

OPERATIONAL

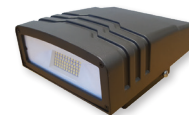
- 3X greater lamp life than fluorescent, supported by industry-leading 5-year warranty
- 50,000-hour lamp life and eliminated ballast reduces long-term maintenance costs
- Instant on, no warm-up time

SAFETY

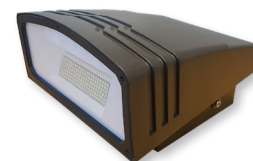
- IP65 housing with IK08 impact protection
- Designed for wet locations
- Negligible light depreciation over time
- Superior light output

SUSTAINABILITY

- Lack of UV or IR minimizes concerns with fading or discoloration
- Mercury-free, allowing for non-hazardous disposal



Small Eco Wall Pack



Medium Eco Wall Pack

ORDER LOGIC (Ex. EWP-S-30-N-40)

Product Description	Size	Lamp Wattage	Dimmability	CCT (K)
EWP = Eco Wall Pack	S = Small	15 = 15W 30 = 30W	N = Non-Dimmable	40 = 4000K 50 = 5000K
	M = Medium	50 = 50W 70 = 70W		



Specification Sheet: LED Eco Wall Packs

MOUNTING OPTIONS



Std. Surface Mount (Housing Back)
(No Mounting Accessory Used)

TECHNICAL DATA (Subject to change)

Catalog No.	Product SKU No.	Rated Watts	Input Voltage (VAC)*	Color Temp (K)	Rated Lumens	Rated Efficacy (lm/W)	CRI	Illumination Angle	Rated Life (Hours)	Operating Temp. (°F)
LED Eco Wall Packs										
EWP-S-15-N-40	281400-003	15	120 & 277	4000	1,560	102	70	120°	50,000	-22 to 122
EWP-S-15-N-50	281400-005	15	120 & 277	5000	1,560	102	70	120°	50,000	-22 to 122
EWP-S-30-N-40	281401-003*	30	120 & 277	4000	2,700	90	70	120°	50,000	-22 to 122
EWP-M-50-N-40	281402-003	50	120 & 277	4000	5,750	115	80	120°	50,000	-22 to 122
EWP-M-70-N-40	281403-003	70	120 & 277	4000	8,050	115	80	120°	50,000	-22 to 122

Product is DLC listed.

* 277VAC mode not DLC-listed.

PHYSICAL DATA

Catalog No.	Product SKU No.	Product Dimensions (in.)	Product Weight (lb)
LED Eco Wall Packs			
EWP-S-15-N-40	281400-003	6.22W x 7.8L x 4.29D	3.52
EWP-S-15-N-50	281400-005	6.22W x 7.8L x 4.29D	3.52
EWP-S-30-N-40	281401-003	6.22W x 7.8L x 4.29D	3.52
EWP-M-50-N-40	281402-003	6.7W x 9.85L x 10.63D	8.95
EWP-M-70-N-40	281403-003	6.7W x 9.85L x 10.63D	8.95