

## Installation Guide: Thin Disk LED Retrofit Kit



5" Thin Disk LED Retrofit Kit



7" Thin Disk LED Retrofit Kit



Optional Magnetic Trim Ring

### Contents:

Carefully open the box and check contents. Contact Revolution Lighting if any items are missing.		
Qty. #	THIN DISK LED RETROFIT KIT [SKU #: (as ordered)]	Thin Disk Downlight (5", 7", 9", 12"), Mounting Hardware, Edison Adapter Whip
Qty. 1	FRICITION MOUNT (6W) OR TORSION-CLIP MOUNT (12W, 18W, 24W) [SKU #: (as ordered)]	Friction Mount or Torsion-Clip Mount for existing recessed light-fixture cans (pots)
Qty. 1	THIN DISK LED RETROFIT KIT INSTALLATION INSTRUCTIONS (SKU #: 300564)	Provides information necessary to install your new Thin Disk LED Retrofit Kit

### Installation Notes & Precautions:

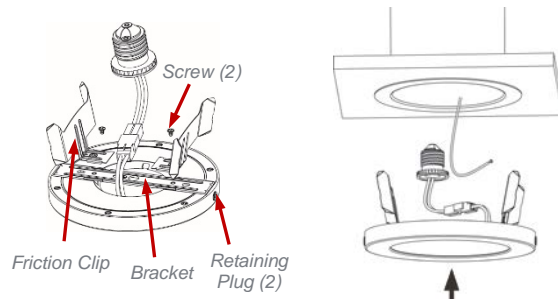
- **Read all precautions, warnings, and instructions contained in this document.**
- These instructions can be used to install the Thin Disk LED Retrofit Kits into properly wired recessed light-fixture cans, ceiling junction boxes, or pre-cut drywall holes when no junction box is installed.
- Installation should be performed by a qualified electrician or installer.
- Installation styles:
  - Friction (6W) and Torsion Clip Mount (12W, 18W, 24W) — Use with existing recessed light-fixture cans (pots).
  - Drywall Spring-Clip Mount (All Models)
  - Surface Mount (All Models)
- Operating voltages: 120VAC ONLY
- This light source is not intended as an emergency exit fixture or light.
- Operating temperature range: -4 °F to 104 °F

### STEP 1



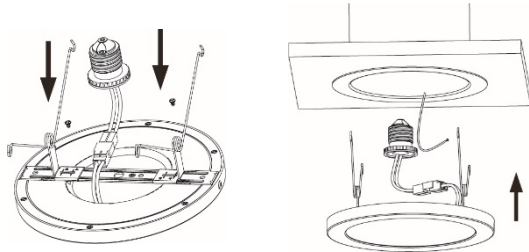
- Disconnect power to installation site.  
**WARNING: Ensure that all power is off using a voltmeter or other method.**

### STEP 2 (Friction-Clip Mount—6W Only)



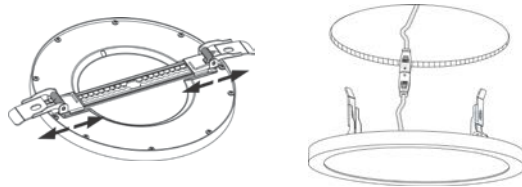
- Remove trim and existing lamp from recessed fixture.
- Install Bracket into the mating slots on the back of Thin Disk and secure it in two places on the side of fixture using the two provided Retaining Plugs.
- Adjust the position/separation of the two Friction-Clip Mounts on the Bracket based on the size of your existing cans (pots), then secure the Friction Clips in place using the appropriate machine screws provided.
- Using appropriate wire nuts, splice the stripped hot (black) and neutral (white) wires of the Thin Disk to the corresponding incoming power leads OR attach Edison Adapter Whip and screw it into existing socket.
- Attach incoming ground wire to metal Bracket using green ground screw.  
**CAUTION: Wire colors can vary, depending on code and circumstances. Make sure that hot, neutral, and ground wires are correctly identified.**
- Insert the Thin Disk with Friction Clip Mounts into the existing recessed can (pot) until the fixture is flush with the ceiling/surface.

### STEP 2 (Torsion-Clip Mount—12W, 18W, & 24W)



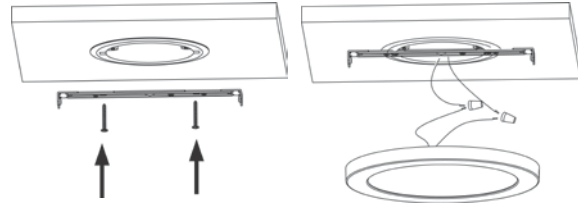
- Remove trim and existing lamp from recessed fixture.
- Install Bracket into the mating slots on the back of Thin Disk and secure it in two places on the side of fixture using the two provided Retaining Plugs.
- Adjust the position/separation of the two Torsion-Clip Mounts on the Bracket based on the size of your existing cans (pots), then secure the Torsion Clips in place using the appropriate machine screws provided.
- Using appropriate wire nuts, splice the stripped hot (black) and neutral (white) wires of the Thin Disk to the corresponding incoming power leads OR attach Edison Adapter Whip and screw it into existing socket.
- Attach incoming ground wire to metal Bracket using green ground screw provided.
- CAUTION: Wire colors can vary, depending on code and circumstances. Make sure that hot, neutral, and ground wires are correctly identified.**
- Compress the Torsion Clip Mounts and insert them into the existing recessed can (pot) until the fixture is flush with the ceiling/surface.

### STEP 2 (Drywall Spring-Clip Mount—All Models)



- Remove trim and existing lamp from recessed fixture.
- Adjust the position/separation of the Drywall Spring-Clip Mounts based on the size of your existing cans (pots), and secure them to the Bracket using the appropriate machine screws provided.
- Using appropriate wire nuts, splice the stripped hot (black) and neutral (white) wires of the Thin Disk to the corresponding incoming power leads.
- Attach incoming ground wire to metal Bracket using green ground screw provided.
- CAUTION: Wire colors can vary, depending on code and circumstances. Make sure that hot, neutral, and ground wires are correctly identified.**
- Compress the Spring Clips and insert them into the drywall opening until the Thin Disk is flush with the ceiling/surface.

### STEP 2 (Surface Mount—All Models)



- Remove trim and existing lamp from recessed fixture.
- Using the anchor and lag screws provided, install the Surface Mounting Bracket onto your ceiling/surface.



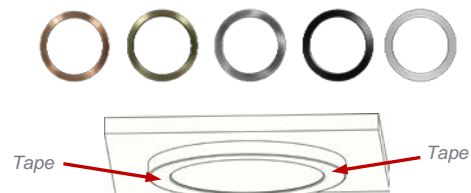
- Using appropriate wire nuts, splice the stripped hot (black) and neutral (white) wires of the Thin Disk to the corresponding incoming power leads.
- Attach incoming ground wire to metal Surface Mounting Bracket using green ground screw provided.
- CAUTION: Wire colors can vary, depending on code and circumstances. Make sure that hot, neutral, and ground wires are correctly identified.**
- Slide both slots on back of Thin Disk onto the two mating tabs of the Surface Mounting Bracket and secure in two places on the side of fixture using the two provided Retaining Plugs.

### STEP 3



- Switch power back on.

### STEP 4 (Optional Trim Ring Installation)





- To install optional Trim Ring, strip protective paper layer from one side of both double-back tape strips provided in the Trim Ring kit.
- Apply adhesive side of both double-back tape strips on outward/downward-facing surface of the Thin Disk, then remove second protective paper layer from both tape strips.
- Slide Trim Ring onto Thin Disk.


### Warnings:

 **WARNING** – Risk of fire or electric shock. Do not alter, relocate, or remove wiring, lampholders, ballasts or any other electrical component. If necessary, contact a qualified electrician for assistance.

 **WARNING** – To prevent wiring damage or abrasion, do not expose wiring to exposed edges of sheet metal or other sharp objects.

 **WARNING** – Always disconnect power for your safety when performing the luminaire modification steps below! In some cases, it may be necessary to test the power feed with the power connected. Only connect the power when doing the testing, then disconnect the power from the luminaire when performing the steps below.

 **WARNING** – Always follow local and regional NEMA Electrical codes. NEMA codes provide information on proper procedures, safety guidelines, proper tools, connection methods, and specifications on materials.

 **WARNING** – Revolution Lighting Technologies, Inc. cannot and will not be liable for any modifications or results of modifications to electrical devices or luminaires. These instructions are provided as a reference. By using the included instructions, you are solely responsible for following all applicable electrical safety procedures, codes, methods, and materials. If you are unsure about any electrical modification or installation, please consult a licensed electrician or electrical contractor in your area.

### Cautions:

 **CAUTION** – Risk of Shock. Use in Dry or Damp Locations Only.

 **CAUTION** – Do not make or alter any open holes in an enclosure of wiring or electrical components during kit installation.