

Specification Sheet: Thin Disk LED Retrofit Kits

The Energy Efficient LED Solution

Now it's even easier to retrofit your downlights with LEDs. Revolution Lighting's edge-lit, Thin Disk Kits offer a simple and unique retrofit solution with four different installation options to accommodate virtually any situation (see Included Mounting Options). These lightweight, thin-panel retrofit kits mount easily onto existing downlight cans (4", 6", 8", and 10"), drywall installations, and general surface mounting. LEDs maximize the return on your lighting investment while delivering smooth light distribution through the edge-lit diffuser. The Thin Disk Retrofit Kits also offer a 70,000-hour rated life and 5-year warranty, significantly reducing your long-term operational and maintenance costs.

APPLICATIONS

- Offices
- Municipal
- Commercial
- Retail
- Schools & Universities
- Hotels
- Hospitals & Clinics
- Assisted Living Facilities

BEAM ANGLE



Revolution Lighting Light Distribution

CAN DECREASE ENERGY USAGE BY



vs. Similar Fluorescent Lamps

WARRANTY



Our Industry-Leading 5-Year Limited Warranty Guarantees Unsurpassed Quality

PRODUCT BENEFITS

OPERATIONAL

- 20X longer lamp life than incandescent
- 70,000-hour lamp life reduces long-term maintenance costs
- Suitable for damp locations
- Triac dimming

SAFETY

- No glass
- Negligible light depreciation over time
- Superior light output

SUSTAINABILITY

- Lack of UV or IR minimizes concerns with fading or discoloration
- Mercury-free, allowing for non-hazardous disposal
- 100% recyclable



ORDER LOGIC (Ex. TDRK-5-6-F-35-D)

Product Description	Dimensions	Wattage	Lens	CCT (K Temp)	Dimming Option
TDRK = Thin Disk Retrofit Kit	- 5 = 5" Dia.	- 6 = 6W	- F = Frosted	27 = 2700	- D = Triac Dimming
	- 7 = 7" Dia.	- 12 = 12W		30 = 3000	
	- 9 = 9" Dia.	- 18 = 18W		35 = 3500	
	- 12 = 12" Dia.	- 24 = 24W		40 = 4000 50 = 5000	



Specification Sheet: Thin Disk LED Retrofit Kits

TECHNICAL DATA (Subject to change.)

Catalog No.	Product SKU No.*	Rated Watts	Lens	Input Voltage (VAC)	Color Temp (K)	Rated Lumens	Rated Efficacy (lm/W)	CRI	Beam Angle (°)	Rated Life (Hours)	Operating Temp. (°F)
6W Thin Disk LED Retrofit Kit (5")											
TDRK-5-6-F-27-D	21A111-000	6	Frosted	120	2700	420	70	81	120	70,000	-4 to 104
TDRK-5-6-F-30-D	21A111-001	6	Frosted	120	3000	420	70	81	120	70,000	-4 to 104
TDRK-5-6-F-35-D	21A111-002	6	Frosted	120	3500	420	70	81	120	70,000	-4 to 104
TDRK-5-6-F-40-D	21A111-003	6	Frosted	120	4000	420	70	81	120	70,000	-4 to 104
TDRK-5-6-F-50-D	21A111-005	6	Frosted	120	5000	420	70	81	120	70,000	-4 to 104
12W Thin Disk LED Retrofit Kit (7")											
TDRK-7-12-F-27-D	21A212-000	12	Frosted	120	2700	889	74	81	120	70,000	-4 to 104
TDRK-7-12-F-30-D	21A212-001	12	Frosted	120	3000	889	74	81	120	70,000	-4 to 104
TDRK-7-12-F-35-D	21A212-002	12	Frosted	120	3500	889	74	81	120	70,000	-4 to 104
TDRK-7-12-F-40-D	21A212-003	12	Frosted	120	4000	889	74	81	120	70,000	-4 to 104
TDRK-7-12-F-50-D	21A212-005	12	Frosted	120	5000	889	74	81	120	70,000	-4 to 104
18W Thin Disk LED Retrofit Kit (9")											
TDRK-9-18-F-27-D	21A213-000	18	Frosted	120	2700	1,340	74	81	120	70,000	-4 to 104
TDRK-9-18-F-30-D	21A213-001	18	Frosted	120	3000	1,340	74	81	120	70,000	-4 to 104
TDRK-9-18-F-35-D	21A213-002	18	Frosted	120	3500	1,340	74	81	120	70,000	-4 to 104
TDRK-9-18-F-40-D	21A213-003	18	Frosted	120	4000	1,340	74	81	120	70,000	-4 to 104
TDRK-9-18-F-50-D	21A213-005	18	Frosted	120	5000	1,340	74	81	120	70,000	-4 to 104
24W Thin Disk LED Retrofit Kit (12")											
TDRK-12-24-F-27-D	21A214-000	24	Frosted	120	2700	2,080	86	82	120	70,000	-4 to 104
TDRK-12-24-F-30-D	21A214-001	24	Frosted	120	3000	2,080	86	82	120	70,000	-4 to 104
TDRK-12-24-F-35-D	21A214-002	24	Frosted	120	3500	2,080	86	82	120	70,000	-4 to 104
TDRK-12-24-F-40-D	21A214-003	24	Frosted	120	4000	2,080	86	82	120	70,000	-4 to 104
TDRK-12-24-F-50-D	21A214-005	24	Frosted	120	5000	2,080	86	82	120	70,000	-4 to 104

* All Thin Disk LED Retrofit Kits come with a universal surface-mount bracket, a drywall spring clip, a torsion clip (12W, 18W, and 24W models), or a friction clip (6W model). Also included with all models is an Edison whip for screw-in socket retrofit applications. See Included Mounting Options.

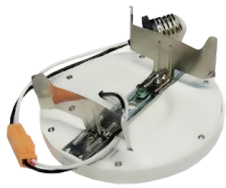
PHYSICAL DATA*

Catalog No.	Product SKU No.	Product Dimensions (in.)	Product Weight (lb)
6W Thin Disk LED Retrofit Kit (5")			
TDRK-5-6-F-YY-D	21A111-00X	5.25" Dia. x 0.5"H	0.45
12W Thin Disk LED Retrofit Kit (7")			
TDRK-7-12-F-YY-D	21A212-00X	7.00" Dia. x 0.5"H	0.78
18W Thin Disk LED Retrofit Kit (9")			
TDRK-9-18-F-YY-D	21A213-00X	8.88" Dia. x 0.5"H	1.23
24W Thin Disk LED Retrofit Kit (12")			
TDRK-12-24-F-YY-D	21A214-00X	11.75" Dia. x 0.5"H	1.49

* Physical data for all Thin Disk Retrofit Kits are obtained without mounting accessories.

Specification Sheet: Thin Disk LED Retrofit Kits

INCLUDED MOUNTING OPTIONS



Friction Clip Mount (6W)

[Use with existing recessed light fixture cans (pots).]



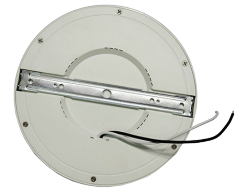
Torsion Clip Mount (12W, 18W & 24W)

[Use with existing recessed light fixture cans (pots).]



Drywall Spring Clip Mount (All Models)

[Use with drywall hole cut in ceiling when no junction box is installed.]



Surface Mount (All Models)

[Use with ceiling junction box.]

ACCESSORIES



Available in five trim ring colors. From left to right: 1) Brushed Red Bronze, 2) Brushed Bronze, 3) Brushed Nickel, 4) Polished Black, and 5) Polished Chrome. Please refer to table below when ordering colors and sizes. (Trim rings mount directly onto the existing trim and are held in place by a magnet inside the fixture housing.)

SKU No.	Color
6W Thin Disk LED Retrofit Kit Trim Ring (5")	
21A00R-101	Brushed Red Bronze
21A00B-101	Brushed Bronze
21A00N-101	Brushed Nickel
21A00K-101	Polished Black
21A00C-101	Polished Chrome
12W Thin Disk LED Retrofit Kit Trim Ring (7")	
21A00R-102	Brushed Red Bronze
21A00B-102	Brushed Bronze
21A00N-102	Brushed Nickel
21A00K-102	Polished Black
21A00C-102	Polished Chrome
18W Thin Disk LED Retrofit Kit Trim Ring (9")	
21A00R-103	Brushed Red Bronze
21A00B-103	Brushed Bronze
21A00N-103	Brushed Nickel
21A00K-103	Polished Black
21A00C-103	Polished Chrome
24W Thin Disk LED Retrofit Kit Trim Ring (12")	
21A00R-104	Brushed Red Bronze
21A00B-104	Brushed Bronze
21A00N-104	Brushed Nickel
21A00K-104	Polished Black
21A00C-104	Polished Chrome