

# Specification Sheet: G2 Line-Voltage LED Battery Backup Kit

## The LED Battery-Backup Solution

When your power goes out, Revolution Lighting's G2 Line-Voltage LED Battery Backup Kit is the ideal accessory to have. The kit is UL-listed as field-installable, rated for damp locations, and complies with UL-924 emergency-lighting standards. Designed with single-end-power LED tube lights in mind, the battery backup also can power any 120VAC line-voltage LED lighting system up to 25W at full power for 90 minutes or more during an outage. \* And when the power is on, the battery draws only 8W max from any 120-277VAC supply circuit while charging. \*\*

This lithium-ion-powered battery backup is surface-mounted, completely enclosed, and includes mounting hardware, 18 in. of 1/2-in. flexible conduit, wire nuts, and a manual test switch.

\* Caution: Do not power any lighting system over 25W or the battery could overheat and be damaged. Not for use with higher-wattage LED high bays, wall packs, etc.

\*\* Note: Not for use with fixtures controlled by Triac dimmers.

### GENERAL SPECIFICATIONS

- 120-277VAC input charging voltage
- 170VDC output voltage (compatible with 120VAC LED driver inputs)
- 25W power output
- At least 90 minutes of backup time at rated wattages
- 8W max power draw when charging

### PRODUCT BENEFITS

- UL Listed for field installation
- Universal line input voltage (120-277VAC)
- Perfect battery backup for UL Type-B line-voltage LEDs up to 25W max
- Provides full-power backup up to 25W for 90 minutes or more
- Works with any Revolution Lighting product requiring 120VAC line voltage (25W max)
- Long-life Li-ion battery in surface-mounted housing with flexible metal conduit
- Damp-location-rated

### WARRANTY



Our Industry-Leading 5-Year Limited Warranty Guarantees Unsurpassed Quality

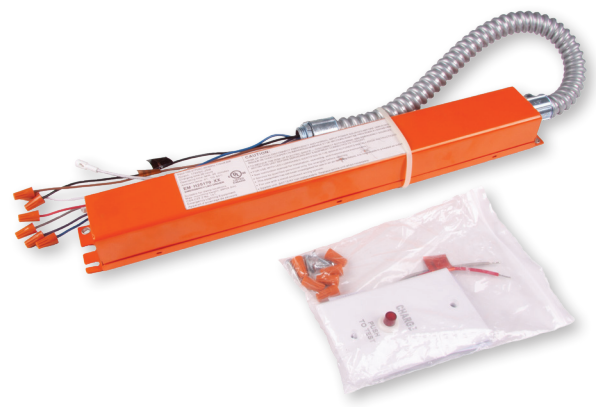
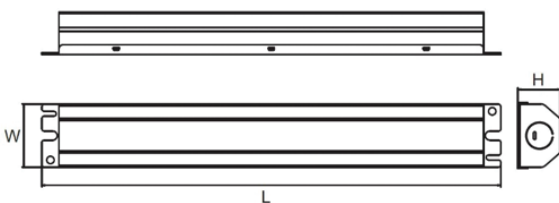
### TECHNICAL DATA (Subject to change.)

SKU No.	Input Voltage (VAC)	Output Wattage (W)	Output Voltage (VDC)	Battery Backup Time	Recharge Time (hr)	Charging Wattage (W)	Mounting	Included Hardware	Operating Temp. (°F)
EM-H25170-XX	120-277	25W Max*	170 (120VAC compatible)	≥ 90 min	36	≤ 8	Surface	Test Switch, Mounting Hardware, Wire Nuts, Flexible Conduit	32-122

\* Caution: Do not power any lighting system over 25W or the battery could overheat and be damaged.

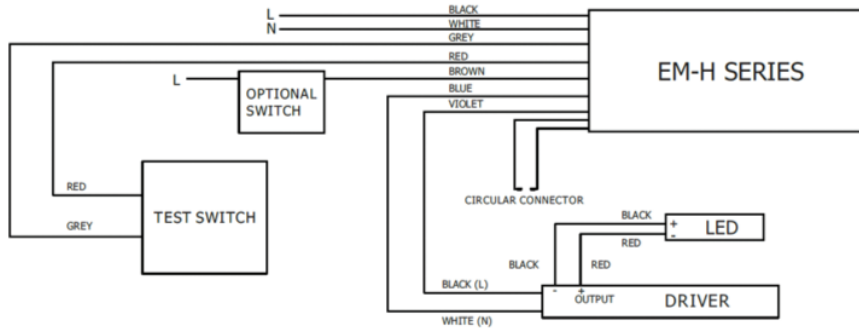
### PHYSICAL DATA

SKU No.	L = Length (in.)	W = Width (in.)	H = Height (in.)	Weight (lb.)
EM-H25170-XX	17.2	2.2	1.6	3.7



# Specification Sheet: G2 Line-Voltage LED Battery Backup Kit





## WIRING DIAGRAM



### WIRING NOTES:

- (1.) Do not mate connector until physical installation is complete.
- (2.) Do not apply AC power until connector is mated.
- (3.) Test accessory leads, observe proper wiring polarity.
- (4.) Wall switch controls on and off of the AC driver when the supplied voltage is normal.
- (5.) Caution: Do not install this backup kit on any fixture that draws more than 25W.
- (6.) Not for use with Triac-dimmed fixtures.

## SUGGESTED PRODUCT COMBINATION EXAMPLES (Not Exhaustive)

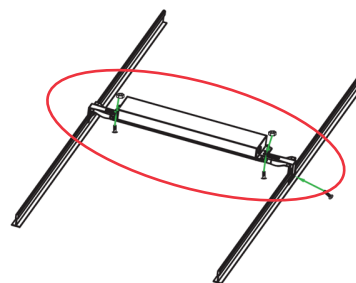
PRODUCT LINE	SKU	WATTS	Quantity Powered*
 Any Type-B Tube Lamp	Various	8-18	1-3
 G2 Utility Lamp	131232-20X	19	1
 2' x 2" Troffer Retrofit Kit	159211-11X	22	1
 2' x 2' ABS Troffer	152030-11X	22	1

\* Note: Quantity assumes a total electrical load of 25W or less.

## AVAILABLE ACCESSORIES



T-Grid Hanger (SKU: TG2)



Example: T-Grid installation of Battery Backup Kit