

Installation Guide: Revolver LED Architectural Wall Pack



Revolver LED Architectural Wall Pack (1 or 2 LED Modules)

Contents:

Carefully open the box and check contents. Contact Revolution Lighting if any items are missing.		
Qty. 1	REVOLVER LED ARCHITECTURAL WALL PACK [SKU #: (as ordered)]	Revolver LED Architectural Wall Pack, Mounting Bracket, and Gasket Pad (EVA)
Qty. 1	INSTALLATION GUIDE: REVOLVER LED ARCHITECTURAL WALL PACK [SKU #: 300571]	Guide for installing Revolver LED Architectural Wall Pack

Installation Notes & Precautions:

- **Read all precautions, warnings, and instructions contained in this document.**
- These instructions can be used to install the Revolver LED Architectural Wall Pack.
- Installation should be performed by a qualified electrician or installer.
- Operating voltages: 120-277VAC
- This light source is not intended as an emergency exit fixture or light.
- Operating temperature range: -4 °F to 113 °F

Recommended Tools & Materials

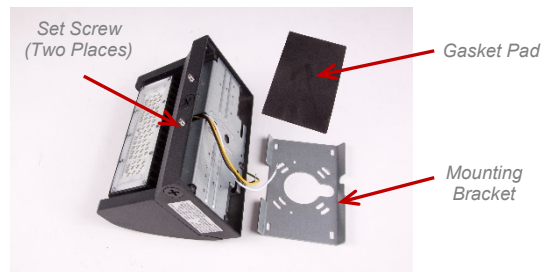
- Metric Allen Wrenches
- Wire Strippers
- Wire Cutters
- Power Drill & Drill Bits
- Measuring Tape
- Wire Nuts or Similar Wire Splices
- Outdoor-Grade Adhesive Caulking

STEP 1 – Turn Off Power



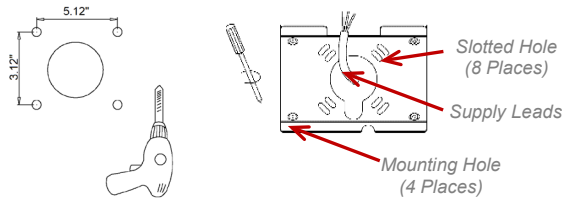
- Disconnect power to installation site.
WARNING: Ensure that all power is off using a voltmeter or other method.

STEP 2 – Prepare Fixture for Installation



- Remove existing fixture, if applicable, and dispose of it according to job/company site rules and regulations.
- Using a metric Allen wrench, loosen the two Set Screws on the fixture-housing bottom to release the Mounting Bracket from the fixture back.
- Prepare the included Gasket Pad for installation by detaching/removing die-cut sections on the pad only at locations where wires or screws need to pass through. Removal locations vary with mounting method (see Step 3).
Do not remove die-cuts yet if unsure how fixture will be mounted.
- Note the pre-existing hole patterns in the Mounting Bracket for securing it to a surface and/or an electrical box.
- Note the standard, 1/2" NPT access ports (3 places) for conduit mounting and wiring.

STEP 3 – Affix Mounting Bracket at Desired Location



Surface Mounting over Recessed Electrical Box

- **IMPORTANT NOTE:** For surface mounting over a recessed electrical box, make sure that electrical box is flush with wall surface. Shim if necessary.
- Center and align the threaded holes of standard electrical box (not shown) with the Slotted Holes of Mounting Bracket (2.75" or 3.5" hole spacing).
- Check that the flat side of Mounting Bracket is against the wall surface, that it is level, and that the two support tabs are pointed upward, as shown in diagram above. (Mounting Bracket mates with Wall Pack in one orientation only.)
- Mark and drill four Mounting Holes in the wall surface using the hole pattern shown in figure above (5.12" x 3.12"). Insert appropriate anchors if needed.
- Remove paper from adhesive side of Gasket Pad, align die-cuts on pad with corresponding holes on Mounting Bracket, and stick pad onto bracket.
- Feed Supply Leads out through large hole in Mounting Bracket/Gasket Pad.
- Secure Mounting Bracket to electrical box using appropriate screws (not included).
- Secure Mounting Plate to wall using appropriate hardware (not included).

Mounting Directly to Surface-Mounted Electrical Box

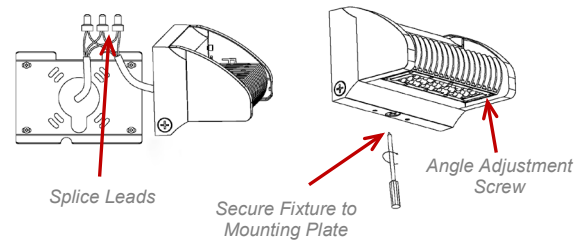
- To secure Mounting Bracket directly to a surface-mounted electrical box (J-box), align the Slotted Holes of Mounting Bracket with the threaded mounting holes of standard electrical box (2.75" or 3.5" hole spacing).
- Check that flat side of Mounting Bracket is facing wall, that it is level, and that the two support tabs are pointed upward, as shown in diagram above. (Mounting Bracket mates with Wall Pack in one orientation only.)
- Feed Supply Leads out from J-box through large hole in Mounting Plate.
- Use appropriate screws (not included) to fasten Mounting Bracket to electrical box. (Confirm that bracket is level before tightening screws.)
- **IMPORTANT NOTE:** Make sure that electrical box is secure enough to support weight of fixture when mounted.

Surface Mounting Directly on Wall for Conduit

- To secure Mounting Bracket directly to a wall surface, place the flat side of Mounting Bracket against the wall at desired location. Check that it is level and that the two support tabs are pointed upward, as shown in diagram above. (Mounting Bracket mates with Wall Pack in one orientation only.)
- **IMPORTANT NOTE:** Make sure that an electrical box (J-box) is located near enough to Mounting Bracket location so that wires from the LED Wall Pack can reach J-box when mounted. (Less than 18 in. center-to-center.)
- Mark and drill four Mounting Holes in the wall using the hole pattern shown in figure above (5.12" x 3.12"). Insert appropriate anchors if needed.
- Remove paper from adhesive side of Gasket Pad, align die-cuts on pad with corresponding holes on Mounting Bracket, and stick pad onto bracket.
- Secure Mounting Bracket/Gasket Pad to wall using appropriate screws (not included). (Confirm that bracket is level before tightening screws.)

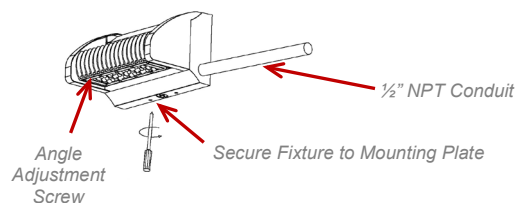
STEP 4 – Wire & Mount LED Wall Pack

Installing Fixture over or on an Electrical Box



- Using appropriate wire nuts/connectors, splice together hot (black), neutral (white), and ground (green) wires from supply leads to corresponding leads of LED fixture.
- **CAUTION:** Wire colors can vary, depending on code and circumstances. Verify that hot, neutral, and ground wires are correctly identified. **CAUTION:** Follow all applicable codes and regulations when wiring.
- Bundle all wires and wire splices inside J-box through large hole in Mounting Bracket.
- Hang LED Wall Pack onto Mounting Bracket by inserting both upright tabs of the bracket into corresponding slots on rear of fixture.
- Using an Allen wrench, firmly tighten the two set screws at bottom of LED Wall Pack to secure fixture to Mounting Bracket.
- When installing over a recessed electrical box, caulk around perimeter of fixture to create a watertight seal between fixture and wall.
- If needed, use appropriate Allen wrench to loosen Angle Adjustment Screw on LED module(s) to change the angle. Retighten screw to secure.

Installing Fixture Directly on Wall with Conduit



- Hang LED Wall Pack onto Mounting Bracket by inserting both upright tabs of bracket into corresponding slots on rear of fixture.
- Remove the appropriate 1/2" NPT plug from port on LED fixture, feed fixture leads through port and into 1/2" NPT conduit pipe, then thread conduit pipe firmly onto fixture.
- Using an Allen wrench, firmly tighten the two set screws at bottom of LED Wall Pack to secure fixture to Mounting Bracket.
- Using appropriate wire nuts/connectors, splice together hot (black), neutral (white), and ground (green) wires of supply leads at nearby J-box to corresponding leads from LED fixture.
- **CAUTION:** Wire colors can vary, depending on code and circumstances. Verify that hot, neutral, and ground wires are correctly identified. **CAUTION:** Follow all applicable codes and regulations when wiring.
- Bundle all wires and wire splices inside J-box and secure cover.
- Caulk around perimeter of LED fixture to create a watertight seal between fixture and wall.
- If needed, use appropriate Allen wrench to loosen Angle Adjustment Screw on LED module(s) to change the angle. Retighten screw to secure.

STEP 5 – Turn On Power



- Switch power back on.
- Readjust angle of LED module(s), if necessary.

Warnings:



Risk of fire or electric shock. Do not alter, relocate, or remove wiring, or any other electrical component. If necessary, contact a qualified electrician for assistance.



WARNING – To prevent wiring damage or abrasion, do not expose wiring to exposed edges of sheet metal or other sharp objects.



Always disconnect power for your safety when performing the luminaire modification steps below! In some cases, it may be necessary to test the power feed with the power connected. Only connect the power when doing the testing, then disconnect the power from the luminaire when performing the steps below.



Always follow local and regional NEMA Electrical codes. NEMA codes provide information on proper procedures, safety guidelines, proper tools, connection methods, and specifications on materials.



Revolution Lighting Technologies, Inc. cannot and will not be liable for any modifications or results of modifications to electrical devices or luminaires. These instructions are provided as a reference. By using the included instructions, you are solely responsible for following all applicable electrical safety procedures, codes, methods, and materials. If you are unsure about any electrical modification or installation, please consult a licensed electrician or electrical contractor in your area.