

Installation Guide: Katana Full-Cutoff LED Wall Pack



Katana Full-Cutoff LED

Contents:

Carefully open the box and check contents. Contact Revolution Lighting if any items are missing.		
Qty. 1	KATANA FULL-CUTOFF LED WALL PACK [SKU #: (as ordered)]	Katana Full-Cutoff LED Wall Pack with included EVA Gasket Pad
Qty. 1	INSTALLATION GUIDE: KATANA FULL-CUTOFF LED WALL PACK [SKU #: 300572]	Guide for installing Katana Full-Cutoff LED Wall Pack

Installation Notes & Precautions

- **Read all precautions, warnings, and instructions contained in this document.**
- These instructions can be used to install the Katana Full-Cutoff LED Wall Pack.
- Installation should be performed by a qualified electrician or installer.
- Operating voltages: 120-277VAC
- This light source is not intended as an emergency exit fixture or light.
- Operating temperature range: -4 °F to 113 °F

Recommended Tools & Materials

- Phillips Screwdriver
- Wire Strippers
- Wire Cutters
- Power Drill & Drill Bits
- Measuring Tape
- Wire Nuts or Similar Wire Splices

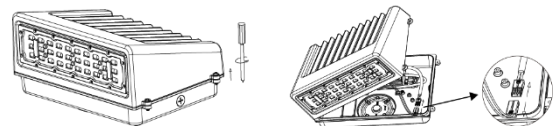
STEP 1 – Turn Off Power



- Disconnect power to installation site.
WARNING: Ensure that all power is off using a voltmeter or other method.

STEP 2 – Prepare Wall Pack for Installation

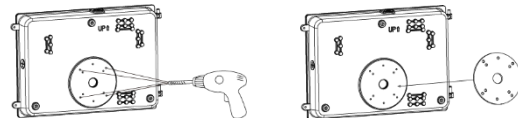
- Remove existing fixture, if applicable, and dispose of it according to job/company site rules and regulations.



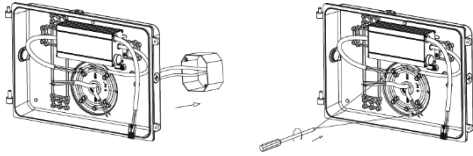
- To access driver compartment, use Phillips screwdriver to loosen two (2) screws securing LED module to housing back.
- Detach LED module from housing back by sliding it off the hinge pins and pulling apart the quick-connect wire connection.
- Set LED module aside.

STEP 3 – Mount and Wire Wall Pack

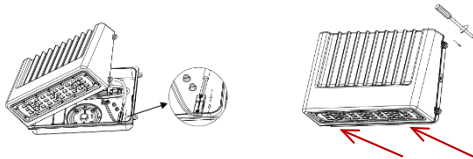
Mounting and Wiring to Electrical Box



- Drill out preexisting dimples on housing back to match the mating mounting holes of electrical/junction box. See Dimple-Pattern Template for hole pattern.
- Remove paper backing from included EVA Gasket Pad and stick pad onto the mounting plate molded on exterior side of housing back, taking care that the hole patterns on the housing and pad match up.



- Unscrew 1/2-in. NPT plug from housing back and insert wiring through hole.
- Using appropriate wire nuts/connectors, splice together hot (black), neutral (white), and ground (green) wires from supply leads to corresponding leads of LED fixture.
- **CAUTION: Wire colors can vary, depending on code and circumstances. Verify that hot, neutral, and ground wires are correctly identified. CAUTION: Follow all applicable codes and regulations when wiring.**
- Splice together purple (+) and gray (-) dimming wires, if needed, using appropriately sized wire nuts or other connectors.
- Bundle all wires and wire splices inside electrical/junction box.
- Secure housing back to electrical box using appropriate mounting screws.



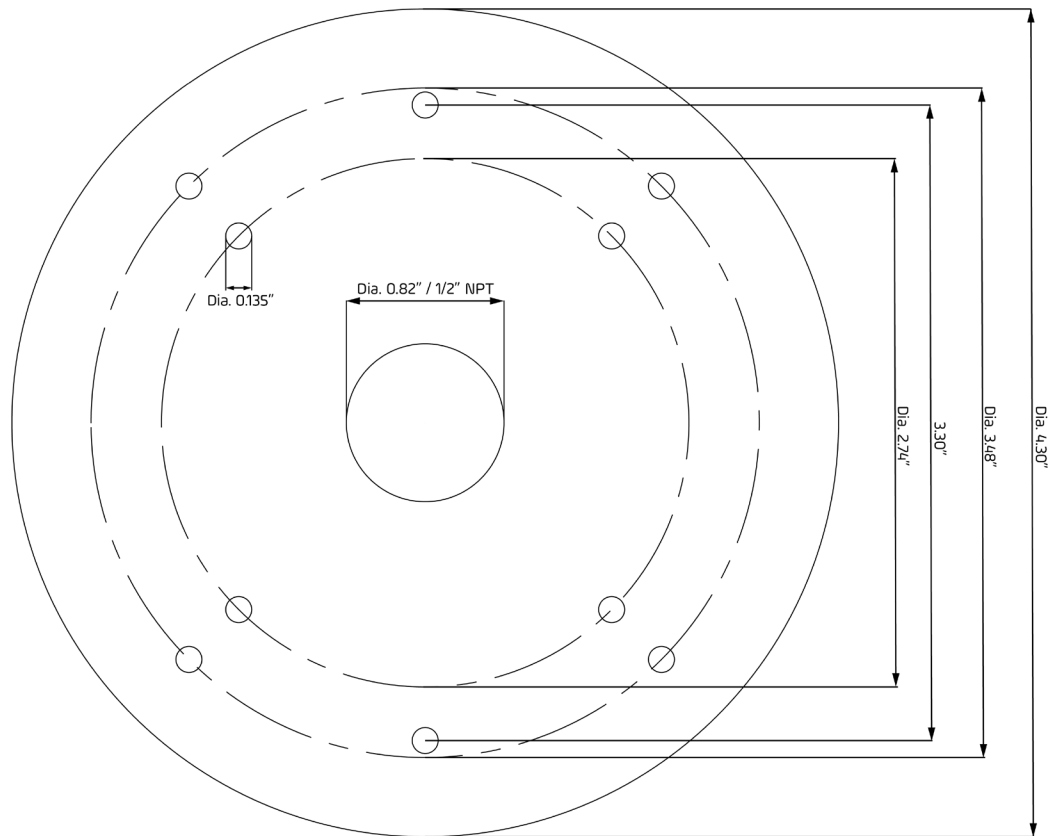
- Slide LED module removed in Step 2 back onto hinge pins.
- Recouple the quick-connect wire connection and re-secure LED module to the mounted housing back.
- Remove both drain plugs indicated by red arrows on the bottom of the fixture.

STEP 4 – Turn On Power








- Switch power back on.

Dimple-Pattern Template



*Image drawn in 1:1 scale.
(Note: Check dimensions after printing if using as a template.)*

Warnings:

-  **Risk of fire or electric shock. Do not alter, relocate, or remove wiring, or any other electrical component. If necessary, contact a qualified electrician for assistance.**
-  **WARNING – To prevent wiring damage or abrasion, do not expose wiring to exposed edges of sheet metal or other sharp objects.**
-  **Always disconnect power for your safety when performing the luminaire modification steps below! In some cases, it may be necessary to test the power feed with the power connected. Only connect the power when doing the testing, then disconnect the power from the luminaire when performing the steps below.**
-  **Always follow local and regional NEMA Electrical codes. NEMA codes provide information on proper procedures, safety guidelines, proper tools, connection methods, and specifications on materials.**
-  **Revolution Lighting Technologies, Inc. cannot and will not be liable for any modifications or results of modifications to electrical devices or luminaires. These instructions are provided as a reference. By using the included instructions, you are solely responsible for following all applicable electrical safety procedures, codes, methods, and materials. If you are unsure about any electrical modification or installation, please consult a licensed electrician or electrical contractor in your area.**